

Town of Kent
Town Board Meeting
March 1, 2022

Executive Session: 6:30 pm

Discuss proposed, pending or current litigation and the medical, financial, credit or employment history of a particular person or corporation, or matters leading to the appointment, employment, promotion, demotion, discipline, suspension, dismissal or removal of a particular person or corporation. The Town Board meeting will follow at 7:00 pm.

Workshop/Meeting

1. Pledge of Allegiance
2. Roll Call
3. Discussion and/or Vote on the following:
 - a. Lake Carmel- Algae Treatment
 - b. Fireworks schedule
 - c. Private Cloud hosting- Servers
 - d. Highway
 - i. Procurement policy- adoption, inclusion
 - ii. Best Value policy- inclusion
 - iii. Appoint MEO operator
 - iv. Appoint CEO operator
 - e. Lake Carmel park clerk- panic button
 - f. Lake Carmel park district- Flammable storage cabinet
 - g. Supervisor- Flammable storage cabinet
 - h. Municipal Repairs
 - i. Accept mechanic resignation
 - ii. Advertise for full time mechanic
 - iii. Purchase Sanitation truck
 - iv. Auction Terrastar Parks department truck
 - v. Purchase Parks department truck
 - i. Ryan's Park- Line striping (Field 1 and Pavilion)
4. Vouchers
5. Announcements
6. Public Comment



Limnology Information and Freshwater Ecology Inc
19 Sandy Pines Blvd
Hopewell Junction, New York 12533
845-227-8805 office
845-227-0406 fax
845-494-1359 cell
www.lifeincponds.com
markroland@lifeincponds.com

February 11, 2022

Jamie McGlasson
Supervisor Town of Kent
25 Sybil's Crossing
Kent Lakes, NY 10512

Re: Lake Carmel

Dear Jamie McGlasson;

I want to thank you for the opportunity to provide a lake management proposal for Lake Carmel. I am aware that the major aquatic problem associated with the lake is a Blue Green Algae Bloom. This problem can be controlled in order for the lake to be esthetically pleasing and useable. The following is an estimate for **Lake Carmel**.

I am recommending the following lake maintenance schedule for the summer of 2022. The lake needs to be treated with an algaecide named Cutrine Ultra and/or Copper Sulfate; I have attached a copy of the manufactures label for your information. You should be aware that although the treatments will clear up the algae blooms, ongoing maintenance is a **yearly** recommendation. The costs for these treatments are as follows:

I. Cutrine Ultra: June, July, August as needed	
Labor and Products: (2 Treatments)	\$18,500.00
II: NYS DEC Pesticide Permit & Permit Preparation fees:	\$200.00
III: NYS Division of Water NPDES Permit fees:	\$110.00

It cannot be determined at this time exactly how many treatments the lake will require. NYSDEC Regulations and the label of Cutrine Ultra are specific that only one half of the water body can be treated at a time. This is a mandatory precaution. With the Carp in the lake, and the low Dissolved oxygen levels at times treating half the lake is in my professional opinion necessary. The \$18,500.00 charge is for 2 treatments of Cutrine Ultra. As in past years, we will apply for a Copper Sulfate permit to have it if necessary.

It is imperative that at the first sign of the Blue Green Algae that the treatments begin. Two treatments should be adequate if the treatments begin at the onset of the algae blooms. If a third treatment is required to keep the lake in good condition due to a hot and dry summer, the additional charge for a third treatment will be \$6500.00. The town will only be invoiced for treatments performed.

The prices above for the treatments include the required products, performing the application and posting the entire shoreline of the lake per NYSDEC regulations. LIFE Inc will also be performing water quality analysis of the DO (Dissolved Oxygen) levels that are needed 24 hours before and after a scheduled treatment. Water quality analysis is an important component to any application of an algaecide in a large lake.

The cost of the permits and associated fees includes the filing fees for 2 NYSDEC Pesticide Permits and one NYSDEC Division of Waters Permit. The preparation fees include hydrogeology work, creating topographical, aerial and scaled maps of the water body; preparing a downstream model and notifications to downstream owners as required by NYSDEC Regulations.

I was a residence of The Town of Kent for 28 years, and my parents lived in 7 Hills Lake for over 30 years. I have a long history with The Town of Kent and as the owner of LIFE Inc I assure you that I have the best of intentions for helping to keep Lake Carmel useable all summer; this proposal is about helping a Lake Community.

If you decide to you use my firm for this work, please sign and return a copy of this estimate, my firm will handle the permit process. Upon receipt of the signed contract I will prepare a NYSDEC aquatic permit package for your signature.

If you have any further questions, please feel free to contact me.

Sincerely,
Mark Roland
Mark Roland
President

Town of Kent

Date

CUTRINE®-ULTRA

ALGAEICIDE/HERBICIDE/CYANOBACTERICIDE

GENERAL INFORMATION

This product is a chelated copper formulation containing an emulsified surfactant/penetrant combination for highly effective control of coarse (thick cell-walled) filamentous algae, mucilaginous (colonial) planktonic algae, Chara and copper-sensitive vascular aquatic plants. This product controls Planktonic (suspended) forms such as the Cyanobacteria (*Anabaena*, *Aphanizomenon*, *Microcystis*, *Pseudanabaena*, *Oscillatoria*), Green algae (*Pandorina*, *Volvox*, & *Eudorina*) Golden Algae (*Pyrenidium parvum*) and Diatoms (*Achnanthes*, *Chaetoceros*, & *Surirella*); Filamentous (mat-forming) forms such as *Spirogyra*, *Cladophora*, *Hydrodictyon*, *Vaucheria*, and *Ulothrix*, and attached, Benthic (bottom-growing) attached forms such as *Chara*, *Nitella*, *Gleotrichia* and *Lyngbya*. This product has also been proven effective in controlling the rooted aquatic plant, *Hydrilla verticillata*, *Egeria densa* and other copper-sensitive species. The ethanolamines in this product prevent the precipitation of copper with carbonates and bicarbonates in the water. Waters treated with this product may be used for swimming, fishing, further potable water treatment, livestock watering or irrigating turf, ornamental plants or crops immediately after treatment.

DIRECTIONS FOR USE

It is a violation of Federal Law to use this product in a manner inconsistent with its labeling. Read entire label and use strictly in accordance with precautionary statements and directions.

GENERAL APPLICATIONS RESTRICTIONS:

(For end-use products in containers ≥ 5 gallons or ≥ 50 pounds.) Do not apply this product in a way that will contact workers or other persons, either directly or through drift. Only protected handlers may be in the area during application. For any requirements specific to your State or Tribe, consult the State or Tribal agency responsible for pesticide regulation.

(For end-use consumer products in containers less than 5 gallons or less than 50 pounds) Do not apply this product in a way that will contact adults, children, or pets, either directly or through drift. Some states may require permits for the application of this product to public waters. Check with your local authorities.

(For all sizes) Do not enter or allow others to enter until application of product has been completed in the area.

PRE-TREATMENT CONSIDERATIONS:

(For end-use products in containers ≥ 5 gallons or ≥ 50 pounds.) In Potable Water Reservoirs, Lakes, Industrial Ponds & Wastewater or other monitored water systems, make initial product treatment at the onset of nuisance bloom conditions as evidenced by initial taste and odor complaints; high cell counts or chlorophyll a concentrations; high MIB or geosmin concentrations; visible surface scum formations; low Secchi disk readings; significant daily fluctuations in dissolved oxygen; and/or sudden increases in pH. Monitoring of several of these parameters on a regular basis will assist in optimizing the timing of treatments and reducing the amounts of this product needed for seasonal control. Identification of primary nuisance species or genera may also be helpful in determining and refining dosage rates.

(For end-use consumer products in containers < 5 gallons or < 50 pounds) In Ponds (Farm, Fire, Fish, Golf Course, Irrigation, Ornamental, Stormwater Retention, Swimming), Small Lakes, Fish Hatcheries, Aquaculture Facilities), start treatment with this product when visible, actively growing algae and susceptible plants appear in spring, preferably before significant surface accumulations occur. Conduct treatments with operating aeration and/or fountain systems, when available.

SURFACE SPRAY / INJECTION

SLOW-FLOWING OR QUIESCENT WATER BODIES

ALGAEICIDE APPLICATION

For effective control, maintain proper chemical concentration for a minimum of three hours contact time. The application rates in the chart are based on static or minimal flow situations. Where significant dilution or loss of water from unregulated inflows or outflows occur (raceways) within a three hour period, chemical may have to be metered in (see FLOWING WATER DIRECTIONS).

1. Identify the form of algae growth present as one of the following types: Planktonic (suspended), Filamentous (mat forming), or Benthic (*Chara/Nitella*) and estimate the density of growth (Low, Medium, High).

2. Use Table 1 - Copper Concentration to select the desired PPM (Parts per Million) Copper needed, based upon the algal form and density.

Table 1 - Copper Concentration

Form of Algal Growth	Density of Growth		
	Low	Medium	High
Planktonic	0.2	0.4	0.6
Filamentous	0.2	0.6	0.8
Benthic	0.4	0.7	1.0

Table 2 - Product Application Rate (Gallons)

PPM Copper	0.2	0.3	0.4	0.5	0.6	0.7	0.8	0.9	1.0
Gallon per Acre-ft	0.6	0.9	1.2	1.5	1.8	2.1	2.4	2.7	3.0

3. Refer to Table 2 - Product Application Rate and determine gallons of product needed per Acre-foot corresponding to the desired PPM concentration determined in step #2.

4. Determine acre-feet within the intended treatment area (area of infestation) by measuring length, width plus averaging several depth readings within the treatment area. Use the formula:

$$\frac{\text{Length (ft.)} \times \text{Width (ft.)} \times \text{Avg. Depth (ft.)}}{43,560} = \text{Acre-Feet}$$

5. Multiply Acre-Feet calculated in Step #4 times the gallons of this product determined in Step #3 to determine number of gallons of this product required for the intended treatment area.

6. Before applying, dilute the required amount of this product with enough water to ensure even distribution with the type of equipment being used. Typical dilution range is 9:1 when using hand-type sprayer or up to 50:1 when using water pump equipment or large tank sprayers.

7. Break up floating algae mats manually before spraying or with force of power sprayer if one is used. Use hand or power sprayer adjusted to rain-sized droplets to cover area evenly taking water depth into consideration. If using underwater injection systems such as drop hoses or injection booms, ensure boat pattern is uniform throughout treatment area. Treat shoreline areas first to avoid trapping fish.

8. Clean spray equipment by flushing with clean water after treatment and follow STORAGE AND DISPOSAL instructions on the label for empty or remaining partial containers.

CUTRINE-PLUS Granular Algaecide may be used as an alternative in low volume flow situations, spot treatments or treatment of bottom-growing algae in deep water.

HERBICIDE APPLICATION

This product controls *Hydrilla verticillata*, *Egeria densa* and other copper-sensitive vascular aquatic plant species can be obtained from copper concentrations of 0.4 to 1.0 ppm resulting from product treatment. Choose the application rate based upon stage and density of plant growth and respective water depth from the chart below.

Application Rates - Gallons/Surface Acre*

Growth/Stage Relative Density	PPM copper	Depth In Feet					
		1	2	3	4	5	6
Early Season Low Density	0.4	1.2	2.4	3.6	4.8	6.0	7.2
	0.5	1.5	3.0	4.5	6.0	7.5	9.0
Mid-Season Moderate Density	0.6	1.8	3.6	5.4	7.2	9.0	10.8
	0.7	2.1	4.2	6.3	8.4	10.5	12.6
Late Season High Density	0.8	2.4	4.8	7.3	9.6	12.0	14.4
	0.9	2.7	5.4	8.1	10.8	13.5	16.2
	1.0	3.0	6.0	9.0	12.0	15.0	18.0

*Application rates for depths greater than six feet may be obtained by adding the rates given for the appropriate combination of depths. Application rates should not result in excess of 1.0 ppm copper concentration within treated water.

FOR USE IN:
LAKES; RIVERS; POTABLE WATER RESERVOIRS; FARM, FIRE, FISH, GOLF COURSE, INDUSTRIAL, IRRIGATION, RECREATIONAL, STORMWATER DETENTION AND WASTEWATER PONDS; FISH HATCHERIES AND RACEWAYS; CROP AND NON-CROP IRRIGATION CONVEYANCE SYSTEMS (DITCHES, CANALS AND LATERALS)

ACTIVE INGREDIENTS:

Copper Ethanolamine Complex, Mixed....27.8%
 (Mono CAS# 14215-52-2 and Tri CAS# 82027-59-6)*

OTHER INGREDIENTS.....72.2%
TOTAL.....100.0%

*Contains 0.9 lbs. of elemental copper per gallon. Metallic copper equivalent, 9%

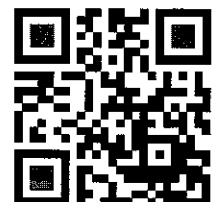
KEEP OUT OF REACH OF CHILDREN DANGER PELIGRO

Si usted no entiende la etiqueta; busque a alguien para que se la explique a usted en detalle. (If you do not understand label, find someone to explain it to you in detail.)

See Additional Precautions on Back

SCAN TO DOWNLOAD PDF ON YOUR MOBILE PHONE

Manufactured for:
 Applied Biochemists
 W175N1163 Stonewood Drive
 Suite 234
 Germantown, WI 53022
 1-800-558-5106
 www.appliedbiochemists.com
 Pat. No. 5,407,899
 EPA Reg. No. 8959-53
 EPA Est. No. 42291-GA-1



**FLOWING WATER
DRIP SYSTEM APPLICATION - FOR USE IN POTABLE WATER
AND IRRIGATION CONVEYANCE SYSTEMS**

PRE-TREATMENT CONSIDERATIONS

In **Crop and Non-Crop Irrigation Conveyance Systems:** Ditches Canals & Laterals, apply product treatments as soon as algae or aquatic vascular plants begin to interfere noticeably with normal delivery of water (clogging of lateral head-gates, suction screens, weed screens and siphon tubes). Delaying treatment could perpetuate the problem causing massing and compacting of plants. Heavy infestations and low flow conditions may require increasing water flow rate during application.

Prior to treatment it is important to accurately determine water flow rates. In the absence of weirs, orifices, or similar devices, which give accurate water flow measurements, volume of flow may be estimated by the following formula:

$$\text{Average Width (feet)} \times \text{Average Depth (feet)} \times \text{Velocity* (feet/second)} \times 0.9 = \text{Cubic Feet per Second (C.F.S.)}$$

*Velocity is the time it takes a floating object to travel a given distance. Dividing the distance traveled (feet) by the time (seconds) will yield velocity (feet/second). Repeat this measurement at the intended application site at least three times, then average the values.

• After accurately determining the water flow rate in C.F.S. or gallons/minute, find the corresponding product drip rate on the chart below.

WATER FLOW RATE		PRODUCT DRIP RATE*		
C.F.S.	Gal/Min	Qts./Hr.	mL/Min.	Fl.Oz./Min.
1	450	1	16	0.5
2	900	2	32	1.1
3	1350	3	47	1.6
4	1800	4	63	2.1
5	2250	5	79	2.7

Calculate the amount of this product needed to maintain the drip rate for a period of 3 hours by multiplying Qts./Hr. x 3; ml/Min. x 180; or Fl. Oz./Min. x 180. Dosage will maintain 1.0 ppm Copper concentration in the treated water for the 3 hour period. Introduce this product into the channel at weirs or other turbulence-creating structures to effectively disperse it.

Pour the required amount of this product into a drum or tank equipped with a brass needle valve and constructed to maintain a constant drip rate. Use a stopwatch and appropriate measuring container to set the desired drip rate. Re-adjust accordingly if flow rate changes during the 3 hour treatment period.

Distance of control obtained down the waterway will vary depending upon density of vegetation growth. Treatment period may have to be extended up to 6 hours in areas where control may be difficult due to high flows or significant growth. Periodic maintenance treatments may be required to maintain seasonal control.

TANK MIXING

On waters where enforcement of use restrictions for recreational, domestic and irrigation uses are acceptable, the following mixture can be used as an alternative Hydrilla control method.

Tank mix 3 gallons of this product with 2 gallons of **HARVESTER®**. Apply mixture at the rate of 5 gallons per surface acre. Dilute with at least 9 parts water and apply as a surface spray or underwater injection. Observe all cautions and restrictions on the labels of both this product and **HARVESTER®** used in this mixture.

OTHER TREATMENT FACTORS AND CONSIDERATIONS

The following suggestions apply to the use of this product as an algacide or herbicide in all approved use sites:

- Calm and sunny conditions when water temperature is at least 60°F will usually expedite control results.
- Treat when growth first begins to appear or create a nuisance, if possible.
- Apply in a manner that will ensure even distribution of the chemical within the treatment area. Effective control of algae requires direct contact with all cells throughout the water column, since these plants do not have vascular systems to transport active ingredient from cell to cell.
- Visible reduction of algae is commonly observed in 24 to 48 hours following application, with full effects of treatments sometimes taking 7 - 10 days depending upon algae forms, weather, degree of infestation and water temperatures.
- Re-treat areas if re-growth or new growth begins to appear and seasonal control is desired. Identify new growth to re-check required copper concentrations that may be needed for control.
- Under conditions of heavy infestation, treat only 1/4 to 1/2 of the water body at a time to avoid fish suffocation caused by oxygen depletion from decaying algae. (See ENVIRONMENTAL HAZARDS).

FIRST AID

If in eyes: Hold eye open and rinse slowly and gently with water for 15-20 minutes. Remove contact lenses, if present, after the first 5 minutes, then continue rinsing eye. Call a poison control center or doctor for treatment advice.

If on skin or clothing: Take off contaminated clothing. Rinse skin immediately with plenty of water for 15-20 minutes. Call a poison control center or doctor for treatment advice.

If swallowed: Call a poison control center or doctor immediately for treatment advice. Have the person sip a glass of water if able to swallow. Do not induce vomiting unless told to do so by a poison control center or doctor. Do not give anything by mouth to an unconscious person.

If inhaled: Move person to fresh air. If person is not breathing, call 911 or an ambulance, then give artificial respiration, preferably mouth-to-mouth if possible. Call a poison control center or doctor for further treatment advice.

Have the product container or label with you when calling doctor, or going for treatment.

In case of emergency call 1-800-654-6911

For spill or cleanup information call CHEMTREC at 1-800-424-9300

Note to Physician: Probable mucosal damage may contraindicate the use of gastric lavage.

**PRECAUTIONARY STATEMENTS
HAZARDS TO HUMANS AND DOMESTIC ANIMALS
DANGER / PELIGRO**

Corrosive. Causes irreversible eye damage and skin burns. Harmful if swallowed or absorbed through the skin. Do not get in eyes, on skin, or on clothing. Wear protective eyewear, clothing, and chemical resistant gloves. Wash thoroughly with soap and water before eating, drinking, chewing gum, using tobacco, or using the toilet. Remove and wash contaminated clothing before reuse.

PERSONAL PROTECTIVE EQUIPMENT (PPE): Mixers, loaders, applicators, and other handlers must wear the following:

- long-sleeve shirt,
- long pants,
- socks plus shoes,
- goggles or face shield and rubber gloves.

User Safety Requirements

Follow manufacturer's instructions for cleaning/maintaining PPE. If no such instructions for washables exist, use detergent and hot water. Keep and wash PPE separately from other laundry. Discard clothing and other absorbent material that have been drenched or heavily contaminated with the product's concentrate. Do not reuse them.

User Safety Instructions

Users must wash hands before eating, drinking, chewing gum, using tobacco, or using the toilet. Users must remove clothing/PPE immediately if pesticide gets inside. Then wash thoroughly and put on clean clothing. Users must remove PPE immediately after handling this product. As soon as possible, wash thoroughly and change into clean clothing. Wash outside of gloves before removing.

Potable water sources treated with this copper product may be used as drinking water only after proper additional potable water treatments.

ENVIRONMENTAL HAZARDS:

(For end-use products in containers <5 gallons or <50 pounds): This product may be hazardous to aquatic organisms. This product may be toxic to trout and other species of fish. Fish toxicity is dependent upon the hardness of water. Do not use in water containing trout if the carbonate hardness of water does not exceed 50 ppm. Do not use in waters containing Koi and hybrid goldfish. Not intended for use in small volume, garden pond systems.

(For end-use products in containers ≥5 gallons or ≥50 pounds): Do not discharge effluent containing this product into lakes, streams, ponds, estuaries, oceans, or other waters unless in accordance with the requirements of a National Pollutant Discharge Elimination System (NPDES) permit and the permitting authority has been notified in writing prior to discharge. Do not discharge effluent containing this product to sewer systems without previously notifying the local sewage treatment plant authority. For guidance contact your State Water Board or Regional Office of the EPA.

Waters treated with this product may be hazardous to aquatic organisms. Treatment of aquatic weeds and algae can result in oxygen loss from decomposition of dead algae and weeds. This oxygen loss can cause fish and invertebrate suffocation.

To minimize this hazard, do not treat more than 1/2 of the water body to avoid depletion of oxygen due to decaying vegetation. Wait at least 10-14 days between treatments. Begin treatment along the shore and proceed outwards in bands to allow fish to move into untreated areas. Consult with the State or local agency with primary responsibility for regulating pesticides before applying to public waters, to determine if a permit is required.

Certain water conditions including low pH (≤ 6.5), low dissolved organic carbon (DOC) levels (3.0 mg/L or lower), and "soft" waters (i.e. alkalinity less than 50 mg/L), increases the potential acute toxicity to non-target aquatic organisms.

STORAGE & DISPOSAL:

Do not contaminate water, food or feed by storage or disposal. Open dumping is prohibited.

PESTICIDE STORAGE:

(For non-refillable containers only): Nonrefillable container. Keep container closed when not in use. Keep pesticide in original container. Do not put concentrate or dilute into food or drink containers. Do not reuse or refill container. Do not contaminate feed, feedstuffs, or drinking water. Do not store or transport near feed or food. Store at temperatures above 32°F.

(For 275 Gallon refillable container only): Refillable container. Keep container closed when not in use. Keep pesticide in original container. Do not put concentrate or dilute into food or drink containers. Refill this container with CUTRINE®-ULTRA only. Do not reuse this container for any other purpose. Do not contaminate feed, feedstuffs, or drinking water. Do not store or transport near feed or food. Store at temperatures above 32°F.

PESTICIDE DISPOSAL: Pesticide wastes are acutely hazardous. Improper disposal of excess pesticide, spray mixture, or rinsate is a violation of Federal Law. If these wastes cannot be disposed of by use according to label instructions, contact your State Pesticide or Environmental Control Agency, or the Hazardous Waste representative at the nearest EPA Regional office for guidance.

CONTAINER DISPOSAL:

(For <5 gallon non-refillable containers only): Do not reuse container. Triple rinse as follows: Empty the remaining contents into application equipment or a mix tank. Fill the container 1/4 full with water and recap. Shake for 10 seconds. Pour rinsate into application equipment or a mix tank or store rinsate for later use or disposal. Drain for 10 seconds after the flow begins to drip. Repeat this procedure two more times. Then offer for recycling or reconditioning if available or puncture and dispose of in approved landfill, or incineration, or, if allowed by state and local authorities, by burning. If burned, stay out of smoke. Consult Federal, State or local authorities for approved alternative procedures.

(For ≥5 gallon non-refillable containers only): Do not reuse container. Triple rinse as follows: Empty the remaining contents into application equipment or a mix tank. Fill the container 1/4 with water and recap. Replace and tighten closures. Tip container on its side and roll it back and forth, ensuring at least one complete revolution, for 30 seconds. Stand container on its end and tip it back and forth several times. Empty the rinsate into application equipment or a mix tank or store rinsate for later use or disposal. Repeat this procedure two more times. Then offer for recycling or reconditioning if available or puncture and dispose of in approved landfill, or incineration, or, if allowed by state and local authorities, by burning. If burned, stay out of smoke. Consult Federal, State or local authorities for approved alternative procedures.

(For 275 Gallon refillable container only): Cleaning the container before final disposal is the responsibility of the person disposing of the container. Cleaning before refilling is the responsibility of the refiller. To clean the container before final disposal, empty the remaining contents from this container into application equipment or mix tank. Fill container about 10 percent full with water. Agitate vigorously or recirculate water with pump for 2 minutes. Pour or pump rinsate into application equipment or rinsate collection system. Repeat rinsing procedure two more times. Then offer for recycling or reconditioning if available or puncture and dispose of in approved landfill, or incineration, or, if allowed by state and local authorities, by burning. If burned, stay out of smoke. Consult Federal, State or local authorities for approved alternative procedures.

Warranty

To the extent consistent with applicable law neither the manufacturer nor the seller makes any warranty, expressed or implied concerning the use of this product other than indicated on the label.

To the extent consistent with applicable law buyer assumes risk of use of this material when such use is contrary to label instructions. Read and follow the label directions.

Cutrine® and Harvester® are registered trademarks of Arch Chemicals, Inc.

50 LBS. NET WEIGHT (22.7 KILOS)

COPPER SULFATE CRYSTALS

ACTIVE INGREDIENT	BY WEIGHT
COPPER SULFATE PENTAHYDRATE.....	99.0%
OTHER INGREDIENTS.....	1.0%
TOTAL	100.0%

CAS #7758-99-8

COPPER AS METALLIC NOT LESS THAN 25%

See back panel for specific pesticidal use directions.

Also for non-pesticidal uses of copper sulfate including but not limited to:

- For Non-Pesticidal Manufacturing and Industrial Uses.
- For manufacturing, repackaging, formulation of algaecides and fungicides.
- For use as foot baths to control hoof rot in cattle.
- For use in preparing Bordeaux mixture.
- For use as a trace mineral for mixing in animal feeds at levels in accord with good feeding and feed manufacturing practices.
- For use as a fertilizer trace mineral for plant growth and used in accord with recommended agronomic practices.

(NOTE: For the states of Wisconsin, California, Oregon and Washington fertilizer recommendations and information, refer to back panel.)

When this product is used as a feed or fertilizer ingredient:

Guaranteed Analysis: Copper (Cu) = 25.0% Derived from Copper Sulfate

KEEP OUT OF REACH OF CHILDREN DANGER - PELIGRO

Si usted no entiende la etiqueta, busque a alguien para que se la explique a usted en detalle.
(If you do not understand the label, find someone to explain it to you in detail.)

FIRST AID	
If on skin or clothing:	Take off contaminated clothing. Rinse skin immediately with plenty of water for 15-20 minutes. Call a poison control center or doctor for treatment advice.
If inhaled:	Move person to fresh air. If person is not breathing, call 911 or an ambulance, then give artificial respiration, preferably by mouth to mouth, if possible. Call a poison control center or doctor for further treatment advice.
If in eyes:	Hold eye open and rinse slowly and gently with water for 15-20 minutes. Remove contact lenses, if present, after the first 5 minutes, then continue to rinse eye. Call a poison control center or doctor for treatment advice.
If swallowed:	Call poison control center or doctor immediately for treatment advice. Have person sip a glass of water if able to swallow. Do not induce vomiting unless told to do so by the poison control center or doctor. Do not give anything by mouth to an unconscious person.
Notes:	Have the product container or label with you when calling a poison control center or doctor, or going for treatment. In the event of a medical emergency, you may also contact the National Pesticide Information Center at 1-800-858-7378.

CHEM ONE LTD. →

This product manufactured for
CHEM ONE LTD.
HOUSTON, TEXAS 77040-6519
TEL. (713) 896-9966

EPA REG. NO. 56576-1
EPA EST. NO. 52117-MX-001

**PRECAUTIONARY STATEMENTS
HAZARDS TO HUMANS AND DOMESTIC ANIMALS
DANGER - PELIGRO**

CORROSIVE: Causes eye damage and irritation to the skin and mucous membranes. Harmful or fatal if swallowed. Do not get in eyes, on skin or on clothing. Do not breathe dust or spray mist. May cause skin sensitization reactions to certain individuals.

PERSONAL PROTECTIVE EQUIPMENT

Applicators and other handlers must wear: Long-sleeved shirt and long pants, chemical-resistant gloves made of any waterproof material, shoes plus socks, and protective eyewear. Some materials that are chemical-resistant to this product are listed below. If you want more options, follow the instructions for category A on an EPA chemical resistance category selection chart. Discard clothing and other absorbent materials that have been drenched or heavily contaminated with this product's concentrate. Do not reuse them. Follow manufacturer's instructions for cleaning/maintaining PPE. If no such instructions for washables, use detergent and hot water. Keep and wash PPE separately from other laundry.

USER SAFETY RECOMMENDATIONS:

Users should: Wash hands before eating, drinking, chewing gum, using tobacco or using the toilet. Remove clothing immediately if pesticide gets inside. Then wash thoroughly and put on clean clothing. Remove PPE immediately after handling this product. Wash the outside of gloves before removing. As soon as possible, wash thoroughly and change into clean clothing.

ENVIRONMENTAL HAZARDS

This product is toxic to fish. Direct application of Copper Sulfate to water may cause a significant reduction in populations of aquatic invertebrates, plants and fish. Do not treat more than one-half of lake or pond at one time in order to avoid depletion of oxygen from decaying vegetation. Allow 1 to 2 weeks between treatments for oxygen levels to recover. Trout and other species of fish may be killed at application rates recommended on this label, especially in soft or acid waters. However, fish toxicity generally decreases when the hardness of water increases. Do not contaminate water by cleaning of equipment or disposal of wastes. Consult your local State Fish and Game Agency before applying this product to public waters. Permits may be required before treating such waters.

STORAGE AND DISPOSAL

PROHIBITIONS: Do not contaminate water, food or feed by storage or disposal. Open burning and dumping is prohibited. Do not re-use empty container.

STORAGE: Keep pesticide in original container. Do not put concentrate or dilutions of concentrate in food or drink containers.

PESTICIDE DISPOSAL: Pesticide wastes are acutely hazardous. Improper disposal of excess pesticide, spray mixture, or rinsate is a violation of Federal law. If these wastes cannot be disposed of by use according to label instructions, contact your State Pesticide or Environmental Control Agency, or the Hazardous Waste representative at the nearest EPA Regional Office for guidance.

CONTAINER DISPOSAL: Completely empty bag into application equipment. Then dispose of empty bag in a sanitary landfill or by incineration, or if allowed by state and local authorities, by burning. If burned, stay out of smoke.

If Plastic Container: Triple rinse (or equivalent). Then offer for recycling or reconditioning, or puncture and dispose of in a sanitary landfill, or by incineration, or, if allowed by state and local authorities, by burning. If burned, stay out of smoke.

STORAGE AND DISPOSAL

Do not contaminate water, food or feed by storage or disposal.

STORAGE: Store in original container and place in a locked storage area.

PESTICIDE DISPOSAL: Call your local solid waste agency (or 1-800-CLEANUP or equivalent organization) for disposal instructions. Unless otherwise instructed, place in the trash. Never pour unused product down the drain or on the ground.

CONTAINER DISPOSAL: Do not reuse this container. Do not rinse unless required for recycling. Place in trash.

DIRECTIONS FOR USE

It is a violation of Federal Law to use this product in a manner inconsistent with its labeling.

Do not apply this product in a way that will contact workers or other persons, either directly or through drift. Only protected handlers may be in the area during application. For requirements specific to your State or Tribe, consult the agency responsible for pesticide regulations.

AGRICULTURAL USE REQUIREMENTS

Use this product only in accordance with its labeling and with the Worker Protection Standard, 40 CFR part 170. This standard contains requirements for the protection of agricultural workers on farms, forests, nurseries, and greenhouses, and handlers of agricultural pesticides. It contains requirements for training, decontamination, notification, and emergency assistance. It also contains specific instructions and exceptions pertaining to the statements on this label about personal protective equipment (PPE), and restricted-entry interval. The requirements in this box only apply to uses of this product that are covered by the Worker Protection Standard.

Do not enter or allow worker entry into treated areas during the restricted entry interval (REI) of 24 hours.

PPE required for early entry to treated areas that is permitted under the Worker Protection Standard and that involves contact with anything that has been treated, such as plants, soil, or water, is: Coveralls, chemical-resistant gloves made of any waterproof material (such as polyvinyl chloride, nitrile rubber, or butyl rubber), shoes plus socks, and protective eyewear.

NON-AGRICULTURAL USE REQUIREMENTS

The requirements in this box apply to uses of this product that are NOT within the scope of the Worker Protection Standard for agricultural pesticides (40 CFR Part 170). The WPS applies when this product is used to produce agricultural plants on farms, forests, nurseries, or greenhouses.

Applicators and other handlers who handle this pesticide for any use NOT covered by the Worker Protection Standard (40 CFR Part 170) must wear: long-sleeved shirt, chemical-resistant gloves made of any waterproof material (such as polyvinyl chloride, nitrile rubber, or butyl rubber), shoes plus socks, and protective eyewear.

GENERAL INSTRUCTIONS FOR USE

Water hardness, temperature of the water, the type and amount of vegetation to be controlled, and the amount of water flow are to be considered in using Copper Sulfate to control algae. Begin treatment soon after plant growth has started. If treatment is delayed until a large amount of algae is present, larger quantities of Copper Sulfate will be required. Algal growth is difficult to control with Copper Sulfate when water temperatures are low or when the water conditions are hard water. Larger quantities of Copper Sulfate will be required to kill and control algae in water which is flowing than in a body of stagnant water. If possible, curtail the flow of water before treatment and hold dormant for approximately three days after treatment or until the algae have begun to die. When preparing a Copper Sulfate solution in water, the mixing container should be made of plastic or glass: or, a painted, enameled, or copper lined metal container. It is usually best to treat algae on a sunny day when the heavy mats of filamentous algae are most likely to be floating on the surface where it can be sprayed directly. If there is some doubt about the concentration to apply, it is generally best to start with a lower concentration and to increase this concentration until the algae are killed.

Treatment of algae can result in oxygen loss from decomposition of dead algae. This loss can cause fish suffocation. Therefore, to minimize this hazard, treat one-third to one-half of the water area in a single operation and wait 10 to 14 days in between treatments. Begin treatments along the shore and proceed outward in bands to allow fish to move into untreated water. NOTE: If treated water is to be used as a source of potable water, the metallic copper residual must not exceed 1 ppm (4 ppm copper sulfate pentahydrate).

CALCULATIONS FOR THE AMOUNT OF WATER IMPOUNDED AND FOR THE AMOUNT OF COPPER SULFATE TO BE USED: Calculate water volume as follows: (1) Obtain surface area by measuring of regular shaped ponds or mapping of irregular ponds or by reference to previously recorded engineering data or maps. (2) Calculate average depth by sounding in a regular pattern and taking the mean of these readings or by reference to previously obtained data. (3) Multiply surface area in feet by average depth in feet to obtain cubic feet of water volume. (4) Multiply surface area in acres by average depth in feet to obtain total acre-feet of water volume.

CALCULATE WEIGHT OF WATER TO BE TREATED AS FOLLOWS: (1) Multiply volume in cubic feet by 62.44 to obtain total pounds of water, or (2) Multiply volume in acre feet by 2,720,000 to obtain pounds of water.

CALCULATIONS OF ACTIVE INGREDIENT TO BE ADDED: To calculate the amount of Copper Sulfate Pentahydrate needed to achieve the recommended concentration, multiply the weight of water by the recommended concentration of Copper Sulfate. Since recommended concentrations are normally given in parts per million (ppm), it will first be necessary to convert the value in parts per million to a decimal equivalent. For example, 2 ppm is the same as 0.000002 when used in this calculation. Therefore, to calculate the amount of Copper Sulfate Pentahydrate to treat 1 acre-foot of water with 2 ppm Copper Sulfate, the calculation would be as follows:

$$0.000002 \times 2,720,000 = 5.44 \text{ lbs. Copper Sulfate Pentahydrate}$$

CALCULATION OF WATER FLOW IN DITCHES, STREAMS, AND IRRIGATION SYSTEMS: The amount of water flow in cubic feet per second is found by means of a weir or other measuring device.

SPECIFIC INSTRUCTIONS

SEWER TREATMENT – ROOT DESTROYER*

ROOT CONTROL GENERAL INFORMATION: Plant roots can penetrate through small cracks and poorly sealed joints of sewer lines. If not controlled, these small roots will continue to grow larger in number causing breakage, reduced flow, and eventually, flow stoppage. Copper sulfate has been known to be an effective means to control roots in residential and commercial sewers.

COMMERCIAL, INSTITUTIONAL, AND MUNICIPAL SEWERS:

ROOT CONTROL IN SEWERS: As a preventive measure, apply into each junction or terminal manhole 2 pounds of Copper Sulfate Crystals every 6 to 12 months. At time of reduced flow (some water flow is essential), add copper sulfate. If flow has not completely stopped, but has a reduced flow due to root masses, add Copper Sulfate Crystals in the next manhole above the reduced flow area. For complete stoppage, penetrate the mass with a rod to enable some flow before treatment.

ROOT CONTROL IN STORM DRAINS: Apply when water flow is light. If no water flow, as in dry weather, use a hose to produce a flow. Apply 2 pounds Copper Sulfate Crystals per drain per year. It may be necessary to repeat treatments 3 to 4 times, at 2 week intervals, if drains become nearly plugged.

SEWER PUMPS AND FORCE MAINS: At the storage well inlet, place a cloth bag containing 2 pounds of Copper Sulfate Crystals. Repeat as necessary.

RESIDENTIAL OR HOUSEHOLD SEWER SYSTEMS:

When a reduced water flow is first noticed, and root growth is thought to be the cause, treat with Copper Sulfate Crystals. It is important not to wait until a stoppage occurs because some water flow is necessary to move the Copper Sulfate Crystals to the area of root growth. Usually, within 3 to 4 weeks, after roots have accumulated sufficient copper sulfate, the roots will die and begin to decay and water flow should increase. As the roots regrow, follow-up treatments with copper sulfate will be required. Applications may be made each year in the spring after plant growth begins, during late summer or early fall, or any time a reduced water flow, thought to be caused by root growth, occurs.

Apply 2-6 pounds Copper Sulfate Crystals two times a year to household sewers. Add Copper Sulfate Crystals to sewer line by pouring about ½ pound increments into the toilet bowl nearest the sewer line and flush, repeat this process until recommended dose has been added, or remove cleanout plug and pour entire recommended quantity directly into the sewer line. Replace the plug and flush the toilet several times.

ROOT CONTROL IN SEPTIC TANK AND LEACH LINES AND LEACH LINE PIPES:

SEPTIC TANKS – The majority of the copper sulfate will settle in the septic tank itself and little will pass into the leach lines. To treat leach line pipes, add 2 to 6 pounds of Copper Sulfate Crystals to the distribution box located between the septic tank and the leach lines. To achieve effective root control in the leach lines it is necessary to transfer Copper Sulfate Crystals from the septic tank to the leach lines. A cleanout plug opening may need to be installed if the distribution box does not have an opening leading to the leach lines.

***NOTE:** Do not apply Copper Sulfate Crystals through sink or tub drains as it will corrode the metal drains.

***NOTE:** Copper sulfate added to an active 300 gallon septic tank at 2, 4 and 6 pounds per treatment will temporarily reduce bacterial action, but it will return to normal approximately 15 days after treatment. Trees and shrubbery growing near a treated line normally are not affected due to only a small portion of their roots being in contact with the copper sulfate. The copper sulfate kills only those roots inside the leach line.

***NOTE:** Do not use as a sewer additive where prohibited by State law. State law prohibits the use of this product in sewage systems in the State of Connecticut. Not for sale or use in the California counties of Alameda, Contra Costa, Marin, Napa, San Francisco, San Mateo, Santa Clara, Solano, and Sonoma for root control in sewers. Not for sale or use in septic systems in the State of Florida.

TO CONTROL ALGAE AND THE POTOMOGETON POND WEEDS, LEAFY AND SAGO, IN IRRIGATION SYSTEMS:

Once the amount of Copper Sulfate required for treating ditches or streams has been calculated, use a continuous application method, selecting proper equipment to supply Copper Sulfate granular crystals as follows:

FOR ALGAE CONTROL – Begin continuous addition application of granular Copper Sulfate when water is first turned into the system and continue throughout the irrigation system, applying 0.1 to 0.2 lbs per cubic ft per second per day.

FOR LEAFY AND SAGO POND WEED CONTROL – Use the same continuous feeder, applying 1.6 to 2.4 pounds Copper Sulfate Pentahydrate per cubic foot per second per day. NOTE: For best control of leafy and sago pond weed, it is essential to begin Copper Sulfate additions when water is first turned into the system or ditch to be treated and to continue throughout the irrigation system. Copper Sulfate becomes less effective as the alkalinity increases. Its effectiveness is significantly reduced when the bicarbonate alkalinity exceeds 150 ppm. Should Copper Sulfate fail to control pond weeds satisfactorily, it may be necessary to treat the ditch with either a suitable approved herbicide or use a mechanical means to remove excess growth. In either case, resume Copper Sulfate addition as soon as possible.

TO CONTROL ALGAE IN IMPOUNDED WATERS, LAKES, PONDS AND RESERVOIRS: There are several methods by which to apply Copper Sulfate to impounded water. Probably the most satisfactory and simplest method is to dissolve the Copper Sulfate crystals in water and to spray this water over the body of water from a boat. A small pump mounted in the boat can easily be used for this purpose. Fine crystals may be broadcast directly on the water surface from a properly equipped boat. A specially equipped air blower can be used to discharge fine crystals at a specific rate over the surface of the water. When using this method, the direction of the wind is an important factor. Do not use this method unless completely familiar with this type of application. Where the situation permits, Copper Sulfate may be applied under the water by dragging burlap bags containing Copper Sulfate. The crystals are placed in burlap bags and dragged through the water by means of a boat. Begin treatment along the shoreline and proceed outward until one-third to one-half of the total area has been treated. Care should be taken that the course of the boat is such as to cause even distribution of the chemical. In large lakes, it is customary for the boat to travel in parallel lines about 20 to 100 feet apart. Continue dragging the burlap bags over the treated area until the minimum dosage is achieved and all crystals have been dissolved. Large or medium size crystals that dissolve slowly should be used with this method.

Copper Sulfate can be applied to impounded waters by injecting a copper sulfate solution in water via a piping system.

CONTROL OF ALGAE AND BACTERIAL ODOR IN SEWAGE LAGOONS AND PITS (Except California):

Application rates may vary depending on amounts of organic matter in effluent stream or retention ponds. Use 2 lbs. of Copper Sulfate Crystals in 60,000 gals. (8,000 cu. ft.) of effluent to yield 1 ppm of dissolved copper. Dosage levels may vary depending upon organic load. Other Organic Sludges: Copper Sulfate Crystal solution must be thoroughly mixed with sludge. Dissolve 2 lbs. in 1-2 gals. of water and apply to each 30,000 gals. of sludge.

Useful formulas for calculating water volume flow rates: Multiply the water volume in cu. ft. times 7.5 to obtain gallons.

Note: 1 C.F.S./Hr. = 27,000 Gals. 1 Acre Foot = 326,000 Gals.

TO CONTROL ALGAE IN IRRIGATION CONVEYANCE SYSTEMS USING THE SLUG APPLICATION METHOD: Make an addition (dump) of Copper Sulfate into the irrigation ditch or lateral at 0.25 to 2.0 lbs. per cubic foot per second of water per treatment. Repeat on approximate 2-week intervals as required. Depending on water hardness, alkalinity and algae concentration, a dump is usually required every 5 to 30 miles. Effectiveness of Copper Sulfate decreases as the bicarbonate alkalinity increases and is significantly reduced when the alkalinity exceeds approximately 150 ppm as CaCO₃.

TO CONTROL ALGAE IN RICE (Domestic and Wild) FIELDS: Application should be made when algae have formed on the soil surface in the flooded field. Applications are most effective when made prior to the algae's leaving the soil surface and rising to the water surface. Apply 10-15 pounds Copper Sulfate Crystals per acre to the water surface as either crystals or dissolve in water and make a surface spray. Apply higher rate in deeper water (6 inches or greater).

TO CONTROL TADPOLE SHRIMP IN RICE FIELDS: Application should be made to the flooded fields any time the pest appears from planting time until the seedlings are well rooted and have emerged through the water. Apply 5-10 pounds Copper Sulfate Crystals per acre. The use rate per acre should be determined by the water depth and flow. Use the lower rate at minimum flow and water depth and the higher rate when water depth and flow are maximum.

STATE	SPECIES	BULLETIN NO.	COUNTY
CALIFORNIA	Solano grass	EPA/ES-85-13	Solano
TENNESSEE	Slackwater Darter	EPA/ES-85-04	Lawrence Wayne Hancock
	Freshwater Mussels	EPA/ES-85-07	Claiborne Hawkins Sullivan
ALABAMA	Slackwater Darter	EPA/ES-85-05	Lauderdale Limestone Madison
VIRGINIA	Freshwater Mussels	EPA/ES-85-06	Grayson Smyth Scott Washington Lee

ENDANGERED SPECIES RESTRICTIONS: It is a violation of Federal Law to use any pesticide in a manner that results in the death of an endangered species or adverse modification of their habitat. The use of this product may pose a hazard to certain Federally designated endangered species known to occur in specific areas within the above counties. *****PLEASE NOTE***** Before using this product in the above counties you must obtain the EPA Bulletin specific to your area. This Bulletin identifies areas within these counties where the use of this pesticide is prohibited, unless specified otherwise. The EPA Bulletin is available from either your County Agricultural Extension Agent, the Endangered Species Specialist in your State Wildlife Agency Headquarters, or the appropriate Regional Office of the U.S. Fish and Wildlife Service. **THIS BULLETIN MUST BE REVIEWED PRIOR TO PESTICIDE USE.**

COPPER SULFATE REQUIRED FOR TREATMENT OF DIFFERENT GENERA OF ALGAE

The genera of algae listed below are commonly found in waters of the United States. Use the lower recommended rate in soft waters (less than 50 ppm methyl orange alkalinity) and the higher concentration in hard waters (above 50 ppm alkalinity). Always consult State Fish and Game Agency before applying this product to municipal waters.

ORGANISM	¼ to ½ ppm*	½ to 1 ppm*	1 to 1½ ppm*	1½ to 2 ppm*
Cyanophyceae (Blue-green)	Anabaena Anacystis Aphanizomenon Gloeotrichia Gomphosphaeria Polycystis Rivularia	Cylindrospermum Oscillatoria Plectonema	Nostoc Phormidium	Calothrix Symploca
Chlorophyceae (Green)	Closterium Hydrodictyon Spirogyra Ulothrix	Botryococcus Cladophora Coelastrum Draparnaldia Enteromorpha Gloeocystis Microspora Tribonema Zygnema	Chlorella Crucigenia Desmidium Golenkinia Oocystis Palmella Pithophora Staurastrum Tetraedron	Ankistrodesmus Chara Nitella Scenedesmus
Diatomaceae (Diatoms)	Asterionella Fragilaria Melosira Navicula	Gomphonema Nitzschia Stephanodiscus Synedra Tabellaria	Achnanthes Cymbella Neidium	
Protozoa (Flagellates)	Dinobryon Synura Uroglena Volvox	Ceratium Cryptomonas Euglena Glenodinium Mallomonas	Chlamydomonas Hawmatococcus Peridinium	Eudorina Pandorina
	* ¼ - ½ ppm = .67 - 1.3 lbs/acre ft.		* 1 - 1½ ppm = 2.6-3.9 lbs/acre ft.	
	* ½ - 1 ppm = 1.3 - 2.6 lbs/acre ft.		* 1½ - 2 ppm = 3.9 - 5.32 lbs/acre ft.	

SCHISTOSOME-INFECTED FRESH WATER SNAILS

For recreational lakes, reservoirs, and ponds, 5.32 -13.3 lbs/acre-ft Copper Sulfate Crystals (i.e., 2-5 ppm copper sulfate), is usually sufficient for treatment of Schistosome-infected fresh water snails. Use surface area in acres multiplied by average depth in feet to determine water volume and application rate. Apply only along shoreline swimming areas and/or to infected snail beds on a calm sunny day when water temp is at least 60°F. Not allowing swimming for at least 12 hrs following treatment is recommended. If this lower dosage is not sufficient, up to 32 ppm copper sulfate, i.e., 87 lbs/acre (= 2 lbs/1000 sq ft) bottom surface area can be applied. Not allowing swimming for 48 hrs is recommended. Using either dosage, a second application may be made if necessary, 10 to 14 days later. DO NOT make more than two applications a season. Broadcast application using boat, aircraft, or hand equipped with power or hand seeder or underwater dispenser. Do not exceed 1 ppm copper (4 ppm Copper Sulfate) in potable water systems. This labeling must be in the possession of the user at the time of pesticide application. **NOTE : In the State of New York** -For use in recreational lakes, reservoirs and ponds ONLY in areas where infected snail beds have been identified. Apply medium grade crystals by hand broadcast method of application only. This product is a restricted use pesticide in New York State. Pesticide applicator certification or a special use permit is required for sale, possession, or use. Each individual treatment must be approved by the Department of Environmental Conservation. Therefore, you must contact the Pesticide Control Specialist at the appropriate regional office of the Department 30 days in advance of the proposed treatment.

FOOT BATHS FOR CATTLE

Foot baths of Copper Sulfate Crystals can be used as an aid in the treatment of hoof rot in cattle. Prior to treatment, a veterinarian should be consulted to confirm presence of hoof rot. Animals may be walked through a foot bath of 2% (add 2 lbs copper sulfate to 11.8 gals water) to 5% (add 5 lbs copper sulfate to 11.4 gals water) aqueous solution with an immersion time of 5 to 20 min twice daily for a period of time as prescribed by a veterinarian. Keep foot baths clean during treatment period. Do not allow cattle to drink from foot baths as copper sulfate is highly toxic. Follow instructions under Storage and Disposal when solutions are discarded at end of treatment period.

Crop	Pounds per Acre					
	Sands		Loams, silts, clays		Organic	
	Bdct ^b	Band	Bdct ^b	Band	Bdct ^b	Band
Lettuce, onion, Spinach	10	2	12	3	13	4
Carrot, cauliflower, celery, alfalfa, clover, corn, oat, radish, sudan grass, wheat	4	1	8	2	12	3
Asparagus, barley, beans, beet, broccoli, mint, pea, potato, rye, soybean	0	0	0	0	0	2

Information received by the Washington State Dept. of Agriculture regarding the components in this product is available on the internet at <http://agr.wa.gov> Information regarding the contents and levels of metals in this product is available at the Oregon Dept of Agriculture internet site: <http://oda.state.or.us/fertilizer>

^aRecommendations are for inorganic sources of copper. Copper chelates can also be used at 1/6 of the rates recommended above. Do not apply copper unless a deficiency has been verified by plant analysis. ^bBdct = broadcast

BORDEAUX SPRAY MIXTURE

Understanding Bordeaux Formulations: If the Bordeaux mixture instructions read 10-10-100, the first figure indicates the number of lbs of Copper Sulfate Crystals. The second figure is the lbs of hydrated spray lime and the third figure is the gallons of water to be used. Use as a full coverage spray to point of runoff.

Preparation of Bordeaux Spray Mixture: Fill a tank 1/4 full with water. Then, with agitator running, mix in Copper Sulfate Crystals through a copper, bronze, stainless steel or plastic screen. Add water so the tank is 3/4 full. Mix in the hydrated spray lime through the screen and finish filling the tank with water.

CROP USE RECOMMENDATIONS

Almond, Apricot, Peach, Nectarine: Shot Hole Fungus – Prepare a 10-10-100 Bordeaux and apply as a dormant spray in late fall or early spring.

Almond, Apricot, Cherry, Peach, Nectarine, Plum, Prune: Brown Rot Blossom Blight – Prepare a 10-10-100 Bordeaux and apply when buds begin to swell.

Apple: Fireblight – Mix 5 lbs of Copper Sulfate Crystals in 100 gals of water and spray uniformly to the point of runoff. Apply in dormant only at silver tip stage. After silver tip, severe burn will occur on any exposed green tissue. Do not mix lime to make a Bordeaux spray for this treatment.

Blueberries: Bacterial Canker – Prepare and apply an 8-8-100 Bordeaux mixture in the fall before heavy rains begin and again 4 weeks later.

Bulbs (Easter Lily, Tulip, Gladiolus): Botrytis Blight – Prepare a 10-10-100 Bordeaux mixture and apply as a foliar spray to 1 acre. Apply for thorough coverage beginning at the first sign of disease and repeat as needed to control disease at 3 to 10 day intervals. Use the shorter intervals during periods of frequent rains or when severe disease conditions persist. Avoid spray just before flower cutting season if residues are a problem.

Caneberries: For leaf and cane spot and Pseudomonas blight, prepare and apply an 8-8-100 Bordeaux mixture in the fall before heavy rains begin and again 4 weeks later.

Cherry (Sweet): Dead Bud, Bacterial Canker (Pseudomonas Syringae) – Prepare a 12-12-100 Bordeaux. Apply at leaf fall and again in late winter before buds begin to swell. In wet cool Northwest U.S. winters, a third spray may be needed between above sprays.

Cherry (Sour): Leaf Spot – Prepare a 10-10-100 Bordeaux. Apply as a full coverage spray after petal fall or as recommended by the State Extension Service.

CITRUS

(NOTE: Adding foliar nutritionals to spray mixtures containing Copper Sulfate Crystals or other products and applying to citrus during the post-bloom period when young fruit is present may result in spray burn.)

Bacterial Blast – Prepare a 10-10-100 Bordeaux spray and apply a spray in late October to early November or before fall rains begin. Make a complete coverage spray using 10 to 25 gals per mature tree.

Lemon, Orange, Grapefruit: Phytophthora Brown Rot - Prepare a 3-4.5-100 Bordeaux mixture only where there is no history of copper injury or use a 3-2-6-100 (Zinc Sulfate-Copper Sulfate Crystals-Hydrated Lime-Gallons of water) Bordeaux mixture. Spray 6 gals on skirt of tree 3 to 4 ft high and 2 to 4 gals on trunk and ground under tree. If P. hibernalis is present, use 10 to 25 gals to completely cover each tree. Apply in November or December just before or after first rain. In severe brown rot season, apply second application in January or February.

Lemon, Orange, Grapefruit: Septoria Fruit, Leaf Spot; Central California – Brown Rot, Zinc, Copper Deficiencies – Prepare a 3-2-6-100 Bordeaux mixture (Zinc Sulfate-Copper Sulfate Crystals-Hydrated Lime Gallons of water) and use 10 to 25 gals to completely cover each tree. Apply in October, November or December before or just after first rain.

Grape: Downy Mildew – Prepare and apply a 2-6-100 Bordeaux spray beginning when downy mildew is detected. Repeat as needed to achieve and maintain control. This mixture and its use will exhibit some phytotoxicity on most varieties.

Grape (Dormant): Powdery Mildew – Apply in spring before bud-swell and before any green tissue is present. Use 4 to 8 lbs of Copper Sulfate Crystals per 100 gals of water. Apply in a high volume spray of 300 gals water per acre. Direct spray to thoroughly wet the dormant vine, especially the bark of the trunk, head or cordons.

Olive: Olive Leaf Spot (Peacock spot), Olive Knot – Prepare a 10-10-100 Bordeaux and apply up to 500 gals per acre. Apply in autumn before heavy winter rains to prevent peacock spot. In wet winters, a repeat spray may be needed in mid-winter. In areas with less than 10 inches of annual rainfall, a 5-5-100 Bordeaux applied in up to 500 gals per acre may be used. To help protect against olive knot, apply a 10-10-100 Bordeaux before heavy rains and again in the spring. Injury may occur in areas of less than 10 inches of rainfall.

Peach: Leaf Curl – Prepare a 10-10-100 Bordeaux and apply at leaf fall or as a dormant spray in late fall or early spring before buds begin to swell.

Potatoes: To enhance vine-kill and suppress late blight, apply 10 lbs. per acre in 10 to 100 gals of water (ground equipment) or in 5 to 10 gals (aerial equipment) with Diquat at vine-kill to enhance vine desiccation and suppress late blight. Additional applications can be made with Diquat if needed to within 7 days of harvest. Copper Sulfate Crystals may be applied alone until harvest to suppress late blight. **NOTE:** This product can be mixed with Diquat for use on potatoes in accordance with the most restrictive of label limitations and precautions. No label dosage rates should be exceeded.

Walnuts: Walnut Blight – Apply 15 lbs with 10 lbs of lime in 100 gals of water. Make application in early pre-bloom before catkin blooms are showing (10-20% pistillate) before or after rain. Use only if Bordeaux mixture has been shown to be non-phytotoxic in your area. If desired, add one-half gal summer oil emulsion per 100 gals of water. **NOTE:** Addition of summer oil emulsion to pre-bloom and early bloom sprays may result in plant injury.

GENERAL CHEMIGATION INSTRUCTIONS

Apply this product only through one or more of the following types of systems: sprinkler including center pivot, lateral move, end tow, side (wheel) roll, traveler, big gun, solid set, or hand move irrigation system(s). Do not apply this product through any other type of irrigation system. Crop injury, lack of effectiveness, or illegal pesticide residues in the crop can result from nonuniform distribution of treated water. If you have questions about calibration, you should contact State Extension Service specialists, equipment manufacturers or other experts. Do not connect an irrigation system (including greenhouse systems) used for pesticide application to a public water system unless the pesticide label-prescribed safety devices for public water systems are in place. A person knowledgeable of the chemigation system and responsible for its operation or under the supervision of the responsible person, shall shut the system down and make necessary adjustments should the need arise.

Posting of areas to be chemigated is required when 1) any part of a treated area is within 300 feet of sensitive areas such as residential area, labor camps, businesses, day care centers, hospitals, in-patient clinics, nursing homes or any public areas such as schools, parks, playgrounds, or other public facilities not including public roads, or 2) when the chemigated area is open to the public such as golf courses or retail greenhouses. Posting must conform to the following requirements. Treated areas shall be posted with signs at all usual points of entry and along likely routes of approach from the listed sensitive areas. When there are no usual points of entry, signs must be posted in the corners of the treated areas and in any other location affording maximum visibility to sensitive areas. The printed side of the sign should face away from the treated area towards the sensitive area. The signs shall be printed in English. Signs must be posted prior to application and must remain posted until foliage has dried and soil surface water has disappeared. Signs may remain in place indefinitely as long as they are composed of materials to prevent deterioration and maintain legibility for the duration of the posting period. At the top of the sign shall be the words "KEEP OUT", followed by an octagonal stop sign symbol at least 8 inches in diameter containing the word "STOP". Below the symbol shall be the words "PESTICIDES IN IRRIGATION WATER". All words shall consist of letters at least 2 ½ inches tall, and all letters and the symbol shall be a color that sharply contrasts with their immediate background. This sign is in addition to any sign posted to comply with the Worker Protection Standard.

CHEMIGATION SYSTEMS CONNECTED TO PUBLIC WATER SYSTEMS:

Public water system means a system for the provision to the public of piped water for human consumption if such system has at least 15 service connections or regularly serves an average of at least 25 individuals daily at least 60 days out of the year. Chemigation systems connected to public water systems must contain a functional, reduced-pressure zone, backflow preventer (RPZ) or the functional equivalent in the water supply line upstream from the point of pesticide introduction. As an option to the RPZ, the water from the public water system should be discharged into the reservoir tank prior to pesticide introduction. There shall be a complete physical break (air gap) between the flow outlet end of the fill pipe and the top or overflow rim of the reservoir tank of at least twice the inside diameter of the fill pipe. The pesticide injection pipeline must contain a functional, automatic, quick-closing check valve to prevent the flow of fluid back toward the injection pump. The pesticide injection pipeline must contain a functional, normally closed, solenoid-operated valve located on the intake side of the injection pump and connected to the system interlock to prevent fluid from being withdrawn from the supply tank when the irrigation system is either automatically or manually shut down. See Treatment Instructions, below.

SPRINKLER CHEMIGATION:

The system must contain functional interlocking controls to automatically shut off the pesticide injection pump when the water pump motor stops, or in cases where there is no water pump, when the water pressure decreases to the point where pesticide distribution is adversely affected. Systems must use a metering pump, such as a positive displacement

injection pump (e.g., diaphragm pump) effectively designed and constructed of materials that are compatible with pesticides and capable of being fitted with a system interlock. The system must contain a functional check valve, vacuum relief valve, and low pressure drain approximately located on the irrigation pipeline to prevent water source contamination from backflow. The pesticide injection pipeline must contain a functional, automatic, quick-closing check valve to prevent the flow of fluid back toward the injection pump. This pipeline must also contain a functional, normally closed, solenoid-operated valve located on the intake side of the injection pump and connected to the system interlock to prevent fluid from being withdrawn from the supply tank when the irrigation system is either automatically or manually shut down. The system must contain functional interlocking controls to automatically shut off the pesticide injection pump when the water pump motor stops. The irrigation line or water pump must include a functional pressure switch which will stop the water pump motor when the water pressure decreases to the point where pesticide distribution is adversely affected. Systems must use a metering pump, such as a positive displacement injection pump (e.g., diaphragm pump) effectively designed and constructed of materials that are compatible with pesticides and capable of being fitted with a system interlock.

TREATMENT INSTRUCTIONS:

Do not apply when wind speed favors drift beyond the area intended for treatment. When mixing, fill nurse tank half full with water. Add Copper Sulfate Crystals slowly to tank while hydraulic or mechanical agitation is operating and continue filling with water. Stickers, spreaders, insecticides, nutrients, etc. should be added last. If compatibility is in question, use the compatibility jar test before mixing a whole tank. Because of the wide variety of possible combinations which can be encountered, observe all cautions and limitations on the label of all products used in mixtures. Copper Sulfate Crystals should be added through a traveling irrigation system continuously or at the last 30 minutes of solid set or hand moved irrigation systems. Agitation is recommended.

NOTICE: CHEM ONE LTD. warrants that this product in its unopened package conforms to the chemical description on the label. THERE ARE NO OTHER WARRANTIES EXPRESS OR IMPLIED, INCLUDING A WARRANTY OF FITNESS FOR A PARTICULAR PURPOSE. This warranty does not extend to the handling or use of this product contrary to label instructions or under abnormal conditions or under conditions not reasonably foreseeable to seller and buyer assumes all risk of any such use.

CHEM ONE LTD.

8017 Pinemont Drive, Suite 100
HOUSTON, TEXAS 77040-6519
TEL: (713) 896-9966

ENVIRONMENTALLY HAZARDOUS SUBSTANCES
SOLID, N.O.S. (CUPRIC SULFATE) UN3077, RQ

Jamie McGlasson

From: Alexa Brandihall
Sent: Tuesday, February 22, 2022 8:46 AM
To: Jamie McGlasson
Subject: Fireworks

Good morning,

Mike from Fireworks Extravaganza would like us to set a date for the Fireworks for 2022. He offered 6/25, 6/26, 7/9, or 7/10.

Thanks,
Alexa

Alexa Brandi-Hall
Confidential Secretary to Supervisor/HBA Administrator
Town of Kent
25 Sybil's Crossing
Kent Lakes, NY 10512
(845) 225-3943 Office



We have prepared a proposal for you

Proposal # 000523
Version 4

Prepared for:

Town of Kent

Richard Harris
rharris@townofkentny.gov

Prepared by:
Magna5 (Pittsburgh)

Paul Downey
pdowney@magna5global.com



1000 Cliff Mine Rd
 #520
 Pittsburgh, PA 15275
 www.magna5global.com
 844-462-4625

OPTION 1: Bill of Materials

Description	Price	Qty	Ext. Price
HPE ML30 HPE ML30 Server	\$3,582.64	1	\$3,582.64
Subtotal:			\$3,582.64

OPTION 1: Private Cloud Hosting

Description	Recurring	Qty	Ext. Recurring
CPU Count	\$15.00	8	\$120.00
RAM (GB)	\$10.00	32	\$320.00
Disk Space (GB)	\$0.15	1700	\$255.00
Bandwidth (MB)	\$15.00	5	\$75.00
Public IP Addresses	\$2.50	1	\$2.50
Managed Firewall (UTM)	\$200.00	1	\$200.00

Server	vCPU	vRAM	HDD Total
TOKDC01	2	8	450
TOKKVS	2	8	450
TOK-CLERK	2	8	300
BAS-IPS	2	8	500
Total	8	32	1700

Option 1 - Monthly Subtotal: \$972.50

OPTION 1: Monitoring & Managed Services

Description	Recurring	Qty	Ext. Recurring
IT Support - Server	\$170.00	5	\$850.00

Option 1 - Monthly Subtotal: \$850.00

OPTION 1: Cybersecurity

Description	Recurring	Qty	Ext. Recurring
Endpoint Detection & Response (add-on for Server Monitoring), per server	\$5.00	5	\$25.00

Option 1 - Monthly Subtotal: \$25.00



1000 Cliff Mine Rd
#520
Pittsburgh, PA 15275
www.magna5global.com
844-462-4625

OPTION 1: Removals

Description	Recurring	Qty	Ext. Recurring
Gold: Mitigate, per Server	\$25.00	-4	(\$100.00)
Removal Subtotal:			(\$100.00)

OPTION 1: Professional Services (One-time Charge)

Description	Price	Qty	Ext. Price
Setup Fee	\$9,075.00	1	\$9,075.00
Subtotal:			\$9,075.00



1000 Cliff Mine Rd
#520
Pittsburgh, PA 15275
www.magna5global.com
844-462-4625

OPTION 2: Bill of Materials

Description	Price	Qty	Ext. Price
HP ML30 HP ML30 Server	\$4,106.35	4	\$16,425.40
Subtotal:			\$16,425.40

OPTION 2: Monitoring & Managed Services

Description	Recurring	Qty	Ext. Recurring
IT Support - Server	\$170.00	4	\$680.00
Option 2 - Monthly Subtotal:			\$680.00

OPTION 2: Cybersecurity

Description	Recurring	Qty	Ext. Recurring
Endpoint Detection & Response (add-on for Server Monitoring), per server	\$5.00	4	\$20.00
Option 2 - Monthly Subtotal:			\$20.00

OPTION 2: Removals

Description	Recurring	Qty	Ext. Recurring
Gold: Mitigate, per Server	\$25.00	-4	(\$100.00)
Removal Subtotal:			(\$100.00)

OPTION 2: Professional Services (One-time Charge)

Description	Price	Qty	Ext. Price
Setup Fee	\$8,250.00	1	\$8,250.00
Subtotal:			\$8,250.00



1000 Cliff Mine Rd
#520
Pittsburgh, PA 15275
www.magna5global.com
844-462-4625

Proposal Information:

Proposal #: 000523

Version: 4

Delivery Date: 02/11/2022

Expiration Date: 04/30/2021

Auto #: 18755

Contract Term (in months): 36

Prepared for:

Town of Kent

25 Sybil's Crossing

Kent, New York 10512

Richard Harris

(914) 414-3250

rharris@townofkentny.gov

Prepared by:

Magna5 (Pittsburgh)

Paul Downey

844-462-4625

pdowney@magna5global.com

Option 1 - Monthly Expenses Summary

Description	Amount
OPTION 1: Private Cloud Hosting	\$972.50
OPTION 1: Monitoring & Managed Services	\$850.00
OPTION 1: Cybersecurity	\$25.00
Option 1 - Monthly Total:	\$1,847.50

Option 2 - Monthly Expenses Summary

Description	Amount
OPTION 2: Monitoring & Managed Services	\$680.00
OPTION 2: Cybersecurity	\$20.00
Option 2 - Monthly Total:	\$700.00

Removal Expenses Summary

Description	Amount
OPTION 1: Removals	(\$100.00)
OPTION 2: Removals	(\$100.00)
Removal Total:	(\$200.00)

Option 1 Proposal Summary

Description	Amount
OPTION 1: Bill of Materials	\$3,582.64
OPTION 1: Professional Services (One-time Charge)	\$9,075.00
Option 1 Total:	\$12,657.64



1000 Cliff Mine Rd
#520
Pittsburgh, PA 15275
www.magna5global.com
844-462-4625

Option 2 Proposal Summary

Description	Amount
OPTION 2: Bill of Materials	\$16,425.40
OPTION 2: Professional Services (One-time Charge)	\$8,250.00

Option 2 Total: \$24,675.40

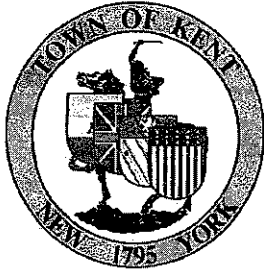
Signature:

Email: rharris@townofkentny.gov

Signature:

Email: rfarina@magna5global.com

	2022	2023	2024	2025	2026	2027	TOTAL OVER 5 Years
OPTION1							
Servers	\$ 3,582.64	\$ -	\$ -	\$ -	\$ -	\$ -	
Setup Fee	\$ 9,075.00	\$ -	\$ -	\$ -	\$ -	\$ -	
Monthly Charge	\$ 1,847.50	\$ 1,847.50	\$ 1,847.50	\$ 1,847.50	\$ 1,847.50	\$ 1,847.50	
TOTAL Opt 1	\$ 14,505.14	\$ 1,847.50	\$ 1,847.50	\$ 1,847.50	\$ 1,847.50	\$ 1,847.50	\$ 23,742.64
OPTION2							
Servers	\$ 16,425.40	\$ -	\$ -	\$ -	\$ -	\$ 16,425.40	
Setup Fee	\$ 8,250.00	\$ -	\$ -	\$ -	\$ -	\$ 8,250.00	
Monthly Charge	\$ 700.00	\$ 700.00	\$ 700.00	\$ 700.00	\$ 700.00	\$ 700.00	
TOTAL Opt 1	\$ 25,375.40	\$ 700.00	\$ 700.00	\$ 700.00	\$ 700.00	\$ 25,375.40	\$ 53,550.80



Town of Kent Highway Department

Richard T. Othmer, Jr., Highway Superintendent

62 Ludington Court

Kent Lakes, New York 10512

(845) 225-7172 Fax (845) 225-9464

highwaykent@townofkentny.gov

February 22, 2022

Jaime McGlasson, Town Supervisor
Town of Kent
25 Sybil's Crossing
Kent Lakes, NY 10512

Dear Supervisor McGlasson,

Please be advised that I will be promoting Troy Chadwick to fill the vacant position of Construction Equipment Operator effective today.

Troy has been an employee of the Town of Kent Highway Department since April 23, 2012. He has seniority and the necessary qualifications including a Class A License.

The position was posted for the required five days as per the bargaining agreement.

Thank you,

Richard T. Othmer, Jr.
Kent Highway Superintendent

2022 FEB 23 AM 11:00

RECEIVED
TOWN OF KENT



Town of Kent Highway Department

Richard T. Othmer, Jr., Highway Superintendent

62 Ludington Court

Kent Lakes, New York 10512

(845) 225-7172 Fax (845) 225-9464

highwaykent@townofkentny.gov

February 22, 2022

Jaime McGlasson, Town Supervisor
Town of Kent
25 Sybil's Crossing
Kent Lakes, NY 10512

Dear Supervisor McGlasson,

Please be advised that I am filling the vacant position of Motor Equipment Operator with Tyler McMath who has been working continuously for the Highway Department as a Seasonal Laborer since September 7, 2021 and has worked previously as a part time seasonal employee for the past few years.

When the Highway Department was in crisis due to COVID, the Delta Variant and Omicron, Tyler served an important role filling in for employees who were out. The various COVID waves affected just about every Highway Employee. There were times I had to detail 2-3 men to the mechanic shop to keep the fleet ready. Tyler worked continuously from, September 7, 2021 to date as a seasonal worker out of necessity as he has all the qualifications needed, has a Class B license and is able to complete every task given to him. I have witnessed his work ethic first hand and he has been a great asset to the Highway Department.

Therefore, I am authorizing waving the twenty-six week probationary period as time served to join the Teamsters and for Health Insurance purposes only. Tyler's official full time date of hire will be February 22, 2022 and all other benefits will accrue using the February 22, 2022 hire date. This courtesy extended by me was fully vetted, and agreed upon between Shop Steward Sean Daly and myself.

Please do not hesitate to contact me with any questions.

Sincerely,

Richard T. Othmer, Jr.
Kent Highway Superintendent



DOYLE[®]
Security for your life.[™]

**Doyle Security
Systems**

2 Summit Court, Suite 102, Fishkill, NY 12524

ADDITIONAL PANIC/DURESS DEVICE

PROPOSAL SUBMITTED TO:

Town of Kent

MAILING ADDRESS:

25 Sybil's Crossing
Kent Lakes, NY 10512

FAX/EMAIL:

abrandihall@townofkentny.gov

BUSINESS PHONE:

(845)225-3943

JOB NAME/LOCATION:

25 Sybil's Crossing
Kent Lakes, NY 10512

ATTN:

Alexa Brandihall

DATE:

February 17, 2022

CONSULTANT:

Chris Pettus

Thank you for the opportunity to submit our proposal for the installation of a wireless duress system for Town of Kent. The installation includes the following:

SCOPE OF WORK:

To install a panic/duress alarms in the Lake Carmel Park District Office at the Town of Kent Town Hall. We provided two (2) options to complete this task.

NOTE:

1. Doyle Security Systems makes no representation as to the response provided by local police agencies. Due to the inability to verify the situation.
2. This system will require in-house policy and procedures be implemented in the event of an emergency to coordinate faculty and patients. Doyle Security Systems makes no representation as to these procedures. Doyle Security Systems will dispatch police upon an alarm and attempt to call personnel listed by Family Services.

OPTION #1 - HARDWIRED

HARDWIRED PANIC/DURESS BUTTONS:

We will furnish and install one (1) panic/duress buttons with wireless transmitters. Anyone pressing the button will activate an alarm condition identical to the existing buttons.

PLEASE NOTE: This will require a wire be installed from the Lake Carmel office to the Access Control Panel in the Electrical Room on the lower level. Labor will be time consuming and future furniture alterations or device additions will require Doyle service to relocate devices.

*****PURCHASE PRICE*****

The above system can be purchased, with a 90 Day guarantee on parts and labor, for **Two Thousand Dollars (\$2,000.00)**

ACCEPTED _____

DECLINED DUE TO COST CONSIDERATION _____

FISHKILL • CATSKILL • ALBANY • SYRACUSE • ROCHESTER • BUFFALO • ERIE

LICENSES: NY - 12000084040; CT - 105734

FIRE • INTRUSION • CARBON MONOXIDE • VIDEO SURVEILLANCE • ACCESS CONTROL • SYSTEM AUTOMATION
PERSONAL EMERGENCY RESPONSE SYSTEMS • U.L. LISTED INSTALLATIONS • CENTRAL STATION MONITORING

ADMINISTRATION
845-896-9500

FAX
845-896-8887

EMERGENCY RESPONSE CENTER
845-897-1200

SERVICE DEPARTMENT
845-897-5550

OPTION #2 - WIRELESS
**** RECOMMENDED ****

We will furnish and install a DMP Control Panel which will provide reliable wireless communication for the proposed panic button but also provides expansion capabilities for other devices or features which will make future alterations easier and cheaper. The control panel will provide outputs to the Access Control System for supervision by Kent PD identical to the existing buttons.

An internet connection must be provided by Town of Kent for programming and panel supervision.

CONTROL PANEL:

We will furnish and install one (1) DMP XR-150N Alarm Control Panel. This advanced, state-of-the-art control panel is equipped with the following features:

- 10 on-board zones, expandable to 142 zones
- Alarm history log with 1,200 event buffer
- Multifunction user (arming) codes
- Flexible system arming features with instant arming option
- On-board network communicator
- U.L listed
- Grounded in conformance with National Electric Code and for added protection against lightning surges.
- Panel will be located in the Electrical Room. Town of Kent must provide a 120VAC outlet in close vicinity of the control panel.

BACK UP BATTERIES:

We will furnish and install one (1) Yuasa 12-volt 7-amp backup batteries with fused harness.

WIRELESS PANIC/DURESS BUTTONS:

We will furnish and install one (1) panic/duress buttons with wireless transmitters. Anyone pressing the button will activate an alarm condition identical to the existing buttons.

*****PURCHASE PRICE*****

The above system can be purchased, with a 90 Day guarantee on parts and labor, for
Two Thousand Three Hundred Dollars (\$2,300.00)

ACCEPTED _____

DECLINED DUE TO COST CONSIDERATION _____

PLEASE NOTE:

Proposal is designed to be a good faith "notice to proceed". Proposal will become an addendum to the forthcoming Sales/Radio Rental/Monitoring Agreement.

DEPOSIT: A 50 percent deposit is due when the contract is accepted, and the balance is due within ten (10) days of completion and sign-off of proposed work.

EMAIL
ADDRESS: _____

By providing your email address, you give Doyle Security Systems the permission to send invoices, system notification alerts as well as other administration notifications. In addition, we will send confirmations and reminders of upcoming service appointments that you make. The safety and security of our clients is our primary concern so please be assured that we WILL NOT under any circumstances share/sell your email address.

ELECTRICAL AND/OR BUILDING PERMIT FEES: Your local municipality may require an electrical and/or building permit(s) be issued and an inspection be requested for this work. **Any fees associated with the electrical and/or building permit(s) and inspections are not included in the proposal and will be billed to the owner at that cost.*

INSURANCE:

Any insurance requirements shall be presented to designer/bidder prior to accepting this proposal. If not, it is presumed that we have satisfied all your insurance requirements.

NOTES:

1. Subscriber is to supply one 120 VAC outlet in close vicinity of control panel and cannot be a GFI outlet.
2. Any changes in the scope of work will be done on a separate agreement.
3. System is expandable as future needs grow.
4. Ethernet port will be required for the internet alarm communicator if desired in future upgrades.

ACCEPTED BY: _____

AUTHORIZED SIGNATURE

PLEASE TYPE OR PRINT NAME

This proposal is subject to Subscriber signing a standard Sales agreement prior to commencing work. Any purchase orders issued are agreeing to the terms and conditions of this proposal.



1-800-295-5510
 uline.com
 customer.service@uline.com

**PRICING
 REQUEST**

REQUEST # 69354417

Thank you for your interest in Uline!

PROVIDED TO: KENT TOWN OF

SHIP TO: KENT TOWN OF

25 SYBILS XING
 KENT LAKES NY 10512-4744

25 SYBILS XING
 KENT LAKES NY 10512-4744

CUSTOMER NUMBER			SHIP VIA	REQUEST DATE	
6582195			J.P. EXPRESS	02/11/22	
QUANTITY	U/M	ITEM NUMBER	DESCRIPTION	UNIT PRICE	EXT. PRICE
1	EA	H-1564M-R	STANDARD FLAMMABLE STORAGE CABINET - MANUAL DOORS, RED, 45 GALLON	845.00	845.00
1	EA	H-1563-ADD	ADDITIONAL SHELF FOR STANDARD FLAMMABLE STORAGE CABINETS - 30 AND 45 GALLON	53.00	53.00

SUB-TOTAL 898.00	SALES TAX .00	SHIPPING/HANDLING 183.48	TOTAL 1,081.48
---------------------	------------------	-----------------------------	-------------------

NOTE:

ATTENTION: HEIDI LINK



1-800-295-5510
 uline.com
 customer.service@uline.com

**PRICING
 REQUEST**

REQUEST # 70013207

Thank you for your interest in Uline!

PROVIDED TO: KENT TOWN OF

SHIP TO: KENT TOWN OF

25 SYBILS XING
 KENT LAKES NY 10512-4744

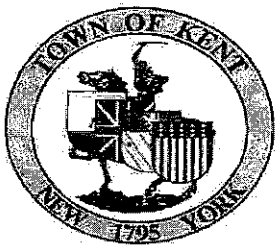
25 SYBILS XING
 KENT LAKES NY 10512-4744

CUSTOMER NUMBER			SHIP VIA	REQUEST DATE	
6582195			J.P. EXPRESS	02/24/22	
QUANTITY	U/M	ITEM NUMBER	DESCRIPTION	UNIT PRICE	EXT. PRICE
1	EA	H-7802BL	LATERAL FIRE-RESISTANT FILE CABINET - 4 DRAWER, 38 X 22 X 53", BLACK	3,085.00	3,085.00

SUB-TOTAL 3,085.00	SALES TAX .00	SHIPPING/HANDLING 214.77	TOTAL 3,299.77
-----------------------	------------------	-----------------------------	-------------------

NOTE:

ATTENTION: ALEXA BRANDI



*Town of Kent Municipal Repairs
62 Ludington Court
Carmel, New York 10512
(845) 225-6612 Fax (845) 225-9464
Nicholas Mancuso, Automotive Service Manager
municipalrepairs@townofkentny.gov*

Date: February 23, 2022

Subject: Resignation/ Two week notice Nick Matos

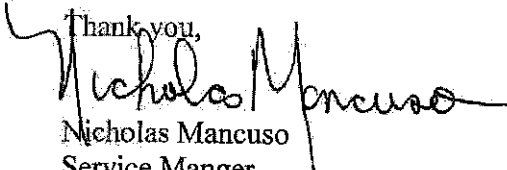
Supervisor Jaime McGlasson and Town board members,

I received a letter of resignation this morning from Nick Matos mechanic for Town of Kent Municipal Repairs. This news comes sudden and is a great loss to the Town of Kent and myself. Nick Matos will be deeply missed.

With the Town board approval I am requesting to start the process for replacing 1 mechanic. I know there is a process first to post internally then out to the public so if we can expedite the process it is deeply appreciated.

I look forward to your response in this matter and if you have any questions please do not hesitate to ask.

Thank you,


Nicholas Mancuso
Service Manger
Town of Kent

Municipal Repairs

From: Nicholas Matos <nickmk4@icloud.com>
Sent: Wednesday, February 23, 2022 9:40 AM
To: Municipal Repairs
Subject: Letter

TOWN OF KENT NOTICE

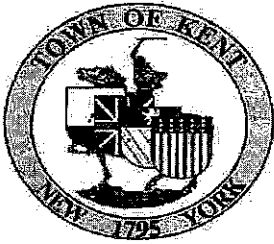
THIS EMAIL IS FROM AN EXTERNAL SENDER!

DO NOT click links, **DO NOT** open attachments, **DO NOT** forward if you were not expecting this email or if it seems suspicious in any way! **REMEMBER: NEVER** provide your user ID or password to anyone for any reason!

Dear Nicholas Mancuso,

First off I would like to thank you and the town of Kent for this amazing opportunity to work in the town I live in and love. I will be putting my two weeks in today as of 2/23/2022. My last day of employment as a mechanic will be March 9th. I would like to offer to train the new hire if hired and start before I leave on my last day. Again thank you very much for this time here and the town of Kent to accept me as family.

Nicholas Matos



Town of Kent Municipal Repairs
62 Ludington Court
Carmel, New York 10512
(845) 225-6612 Fax (845) 225-9464
Nicholas Mancuso, Automotive Service Manager
municipalrepairs@townofkentny.gov

Date: February 17, 2022

Subject: Parks Dept Terrastar/Auction

Supervisor Jaime McGlasson and Town board members,

I met with Parks department crew chief Frank Sabatini regarding vehicle replacement and auction various pieces of antiquated equipment.

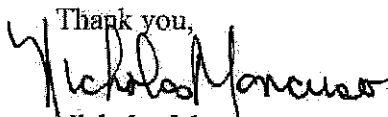
The Parks department truck which is 2016 International Terrastar VIN# 1HTKPSKK0GH088464 4x4 combination dump body and plow. A versatile truck and was once a Highway department truck does not fit the parks department needs.

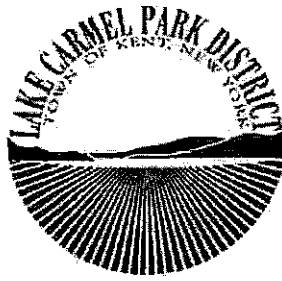
With the Town Board approval I can Auction the truck on Auctions International. With the current climate in the resale market this truck will give a return past my expectations and the Town can replace this vehicle with a proven Ram 5500 4x4 dump plow truck. This truck is versatile and is part of highways fleet. I can purchase one on contract and use the proceeds from the Auction to offset the purchase.

There was a Board resolution #115 to auction obsolete equipment for the Parks department. I will wait for Town Board approval on this matter and at that time will add the Terrastar truck to the auction.

I look forward to your response in this matter and if you have any questions please do not hesitate to ask.

Thank you,


Nicholas Mancuso
Service Manger
Town of Kent



February 7, 2022

Request to dispose of equipment

Stihl Chainsaws (15-20 years old)

- One (1) – Model 036 (Serial #1125 791 1001)
- One (1) – Model 021 (Serial #1128 791 1001)
- One (1) – Model 009 (Serial # unknown)
- One (1) – Model 009L (Serial # unknown)

Stihl Weed Trimmers

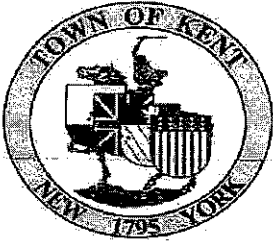
Cost to repair outweighs replacement

- One (1) – Model FS91R (Serial #513109931)
- One (1) – Model FS90R (Serial #291822075)
- One (1) – Model FS80R (Serial # unknown)
- One (1) – Model unknown (Serial # unknown)

Walk Behind Scag Mower

Not run in 6 years, would require major repairs

- One (1) - 52" Advantage - Kawasaki engine (Serial #8140030)



Town of Kent Municipal Repairs

62 Ludington Court

Carmel, New York 10512

(845) 225-6612 Fax (845) 225-9464

Nicholas Mancuso, Automotive Service Manager

municipalrepairs@townofkentny.gov

Date: February 22, 2022

Subject: Parks Department New truck purchase

Supervisor Jaime McGlasson and Town board members,

This is a follow up from letter written February 17th regarding the Parks department replacement truck with a Ram 5500.

After inquiring with the Ram dealer (Robert Green Truck) vehicle inventory is limited and pricing is inflated. At the moment there is a vehicle in inventory at Robert Green that would fit our needs and is on a contract. With Town Board approval I can purchase this vehicle from a statewide contract as follows: Onondaga city # ONGOV-106-19. Spec sheet and pricing attached.

With the truck outfitted to the Parks department needs the total is \$77,587.30

This is a \$10,000.00 savings if purchased from inventory as opposed to a build date.

I asked for a hold on this truck as a courtesy it was granted.

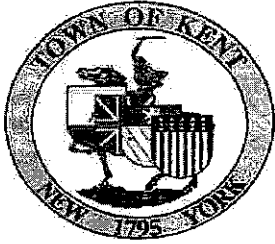
I look forward to your response in this matter and if you have any questions please do not hesitate to ask.

Thank you,


Nicholas Mancuso

Service Manger

Town of Kent



Town of Kent Municipal Repairs
62 Ludington Court
Carmel, New York 10512
(845) 225-6612 Fax (845) 225-9464
Nicholas Mancuso, Automotive Service Manager
municipalrepairs@townofkentny.gov

Date: February 22, 2022


Subject: Sanitation Fleet

Supervisor Jaime McGlasson and Town board members,

Per my last letter to the Town dated February 17, 2022 regarding the purchase of a Sanitation truck I am attaching an updated price sheet. There were some options that were not listed on the past spec sheet and had them added in. For an example locking of the rear differential. This is extremely helpful in snow and foul weather. The updated price is \$247,216.60

I look forward to your response in this matter and if you have any questions please do not hesitate to contact me.

Thank you,


Nicholas Mancuso
Service Manger
Town of Kent

Beam Mack Sales Service, Inc.

6260 E Molloy Rd.

E Syracuse, NY 13057

ONONDAGA COUNTY HEAVY TRUCK CLASS 8 STATEWIDE

CONTRACT

8996

GRANITE 64 BR PRICE SHEET ONONDAGA

CUSTOMER: Town of Kent

CHASSIS QUOTED: Granite 6BR /Allison 4500RDS

	<u>CHASSIS BASE PRICE</u>	<u>CHASSIS OPTIONS</u>	<u>TOTAL</u>
MACK GRANITE. 2024 Model Year	\$172,848.00		
DISCOUNT FROM LIST	\$51,854.40		
CHASSIS PRICE less DISCOUNT	\$120,993.60		
OPTIONS LIST PRICE TSP		\$26,150.00	
OPTIONS DISCOUNT FROM LIST PRICE		\$7,845.00	
OPTION PRICE Less DISCOUNT		\$18,305.00	

CHASSIS PRICE WITH CONTRACT OPTIONS AND DISCOUNT =

\$139,298.60

Net Contract Items:ECM Programing Engine / Transmission warranty/2024 Model year escalator

\$9,929.00

TOTAL WITH NON CONTRACT OPTIONS =

\$149,227.60

DELIVERY CHARGE FROM CHART

\$230.00

TOTAL PRICE FOR CHASSIS WITH ALL OPTIONS DELIVERED

\$149,457.60

LIST PRICE FOR BODY & Equipment : LIS

\$139,655.71

CONTRACT DISCOUNT 30%

\$41,896.71

TOTAL PRICE FOR BODY & Equipment : LIS

\$97,759.00

TOTAL PRICE FOR COMPLETE TRUCK:

\$247,216.60

Delivery Estimate Q1 , Q2 of 2023

Sincerely, Greg Angwin

Long Island Sanitation Equipment Co.

1670 New Highway, Farmingdale, NY 11735 • Tel: 631-531-9292 • Fax: 631-531-9333



January 25, 2022

Quote #: 012522CHC

Beam Mack
6260 Molloy Road
East Syracuse, NY 13057
ATTN: Greg Agwin

RE: Town of Kent - Onondaga County Contract

**ONE (1) NEW - NEW WAY COBRA HIGH COMPACTION 25YD. REAR LOADER
MOUNTED ON MACK GRANITE CHASSIS**

Standard Features to Include:

- 3.0 Cubic Yard Hopper
- Semi Automatic Cycling
- Auto Back Pack
- Accelerator Kit
- Hydraulic Auto Tailgate Lock
- Back Up Alarm
- Light Bar
- LED Lights, All
- Sight Gauge Hydraulic Oil Tank
- Chrome Rod Cylinders
- Side Access Door
- Driver Alert Buzzer Curbside
- Tailgate Ajar Indicator
- Bolt on Steps on Rear Tailgate
- Prime Paint with Rust Inhibitor
- Color Rear Vision Camera System
- Hydraulic Safety Shut Down Curbside
- Fire Extinguisher – 10lb (*standard safety*)
- Triangle Kit (*standard safety*)
- Zinc Clear Hydraulic Tubes
- Mounted @ New Way/Scranton Manufacturing in Scranton, Iowa
- Standard New Way Warranty, 1 Year Body and Hydraulics, 2Year Hydraulic Cylinders

Quotation # 012522CHC – Town of Kent page 2 of 2

Also To Include The Following:

- 12,000LB. Winch w/ Latch Kit
- Auto Transmission Hot Shift PTO with Electronic Overspeed and Pack-on-the-Go
- Work Lights Mounted Inside Tailgate (2)
- LED Oval Strobe Lights Mounted on Upper Tailgate (2)
- LED Oval Strobe Lights Mounted at Front of Body (2)
- Full Body Weld vs. Stitched
- Tailgate Seal Extension
- Shovel/Broom Rack
- Nylon Sleeves on Hoses
- Body Painted White
- Operator Training

New Way 25RL Cobra High Compaction Mounted On Mack Granite Chassis
Total Onondaga County Contract Price: \$97,759.00 F.O.B. Kent, NY

Thank you for the opportunity to quote on your requirements and we hope to be favored with your most valued order.

Respectfully,

LONG ISLAND SANITATION EQUIPMENT CO.
David Cope
516-695-1721

TECHNICAL SPECIFICATION

GRANITE 64BR



APPLICATION PACKAGES		DESCRIPTION
	MPK0LK	CHASSIS CONFIGURATION PACKAGE
S	MBP02P	BODY BUILDER PACKAGE

CUSTOMER/VEHICLE INFO		DESCRIPTION
S	002EO2	CHASSIS (BASE MODEL)
S	99X93X	ASSEMBLY PLANT
	MP2001	CUSTOMER FLEET SIZE
	013002	TYPE OF SERVICE
S	M98018	WARRANTY REGISTRATION LOCATION
	MBT02T	EMISSION WARRANTY CERTIFICATION
S	5050B5	INITIAL REGISTRATION LOCATION
S	534014	LANGUAGE-PUBS/DECAL/SIGNS
S	DHX10X	ROAD CONDITION
	0050V5	VEHICLE USE & BODY/TRAILER TYPE
	2KEZ1X	TRAILER TYPE
S	DKX99X	GROSS COMBINATION WEIGHT (CA in PC29 only)
S	70BB1X	BRAKE REGULATION
	QCXA1X	TOPOGRAPHY
S	E1BD1X	AMBIENT TEMP UPPER LIMIT (GTA)
S	032A89	TERRAIN GRADE
S	033A10	LOADING SURFACE
	0342A3	VEHICLE VOCATION

ENGINE/TRANSMISSIONS		DESCRIPTION
	1000Q0	ENGINE PACKAGE, COMBUSTION
S	3GCB1X	GHG APPLICATION, VEHICLE
	136AS6	TRANSMISSION
S	V4EZ9X	GEARBOX 12TH GEAR LOCK-OUT

EXHAUST/EMISSIONS		DESCRIPTION
	CIRAA4	CARB 2008 IDLE REGULATION
S	DPF04F	DPF DIESEL PARTICULATE FILTER
	MCF08F	CHASSIS MOUNTED EMISSIONS FINISH
S	DF1001	DIESEL EXHAUST FLUID TANK
	130AD7	EXHAUST
	KRXAPX	EXHAUST STACK HEIGHT
	Q0AC4X	EXHAUST SYSTEM MATERIAL FINISH
	78ADAX	EMISSION ON BOARD DIAG CONTROL

ENGINE EQUIPMENT		DESCRIPTION
	125025	AIR CLEANER

TECHNICAL SPECIFICATION (cont.)



ENGINE EQUIPMENT		DESCRIPTION
S	121AA5	BUG SCREEN BLACK ALUMINUM BUG SCREEN MOUNTED BEHIND GRILLE, WITHOUT WINTER FRONT COVER
S	1130L3	AIR COMPRESSOR/DRYER WABCO AIR DR SS-HP AIR DRYER W/ WABCO 318 (18.7 CFM) AIR COMPRESSOR
S	KOXA1X	AIR DRYER POSITION (CA) AIR DRYER POSITION STANDARD
S	132AB9	ALTERNATOR DELCO 12V 160A (28SI) BRUSH-TYPE
	316AA7	BATTERIES (3) MACK 12V 1000/3000 CCA THREADED STUD TYPE
S	393AB0	BATTERY BOX - MOUNTING (x) RH RAIL BEHIND SCR
S	L5XA1X	BATTERY BOX COVER MOLDED PLASTIC
	318AA3	BATTERY DISCONNECT SWITCH FLAMING RIVER BIG SWITCH WIRED TO POSITIVE SIDE
S	NCXA5X	STARTER MOTOR 12 VOLT DELCO 39MT-MXT
S	110AA5	ENGINE BRAKE MACK MP7 POWERLEASH
S	JMXB1X	ENGINE BRAKE LIGHTING (CA) VEHICLE AND TRAILER (IF APPLICABLE) STOP LAMPS ACTIVATE UPON SERVICE BRAKE APPLICATION ONLY(38899000)
S	118AB8	FAN DRIVE BEHR FAN AND ELECTRONIC MODULATING VISCOUS FAN DRIVE
S	119A19	COOLANT PROTECTION ETHYLENE GLYCOL FULLY FORMULATED COOLANT (50/50 MIX DYED PINK) TO -34DEG, W/ FILTER
	H9XK1X	RADIATOR TYPE RADIATOR, CORE AREA W/O FEPTO 1345sq in (86sq dm), CORE AREA W/ FEPTO 1296sq in (83sq dm)
S	124AA3	HOSES - RADIATOR/HEATER MACK EPDM RADIATOR & HEATER HOSES
S	293043	FUEL-WATER SEPARATOR MACK W/MANUAL DRAIN VALVE W/ HOT RECIRCULATION (INTEGRAL W/ PRIMARY FUEL FILTER)
S	MBXA1X	PRIMARY FUEL FILTER POSITION (CA) STANDARD FUEL FILTER POSITION
	MCA04B	ENGINE HEATERS GRID HEATER + 120v 1500w BLOCK HEATER ONLY (120V-15A PLUG)
S	QHXC1X	OIL SUMP OIL PAN
S	2YBZ1X	ENGINE STOP, EMERGENCY (CA in PC29 only) WITHOUT ENGINE STOP, EMERGENCY

CLUTCH/TRANS EQUIPMENT		DESCRIPTION
	492007	GEAR SHIFTER ALLISON DASH MOUNTED SHIFTER W/NEUTRAL TO RANGE INHIBIT (HD SERIES)
S	MCB05B	CLUTCH ACTUATION SYSTEM & PEDAL PAD WITHOUT CLUTCH CABLE SYSTEM
	195AB3	DRIVELINE - MAIN SPICER 1810 HD W/COATED SPLINES (PROPS-L)
	204AA8	DRIVELINE - INTERAXLE SPICER 1810 W/COATED SPLINES
	76AA1X	PROPELLR SHAFT MAIN, UNVSL JNT UNIVERSAL JOINT HALF-ROUND TYPE
S	8WAAAX	PROP SHAFT INTERAXL UNIV JOINT HALF-ROUND UNIVERSAL JOINT
S	4LDA1X	TRANSMISSION OUTPUT TORQUE TRANSMISSION OUTPUT TORQUE BASIC
S	RCXB1X	BELL HOUSING ALUMINUM
	7RXAEX	LUBRICANTS, TRANSMISSION TRANSYND SYNTHETIC LUBE FOR ALLISON TRANS
	139AA7	TRANSMISSION OIL COOLER ALLISON TRANSMISSION W/DIRECT MOUNT COOLER

FRONT AXLE EQUIPMENT		DESCRIPTION
	240AA3	FRONT AXLE 20000# (9100 KG) MACK FXL20 WIDE PIVOT CENTER STRAIGHT SPINDLE/UNITIZED BEARINGS
	244AB4	SPRINGS - FRONT MACK TAPERLEAF 20000# (9100 KG) GROUND LOAD RATING, EQUAL BIAS
S	2410B1	FRONT AXLE BRAKES MERITOR "S" CAM TYPE 16.5" x 6" Q+
S	U3XA1X	BRAKE, FRONT CAST IRON
S	U0AA1X	FRONT BRAKE ADJ. MANUFACTURE HALDEX - AUTOMATIC
S	V7AD1X	FRONT BRAKE CHAMBER MFG. FRONT BRAKE CHAMBER MANUFACTURER, MGM
S	0KXA1X	HUB MATERIAL, FRONT FERROUS
S	1KAA1X	SHOCK ABSORBER, FRONT DOUBLE ACTING TYPE
S	245AA3	STEERING TRW TAS66+RCH60 POWER

TECHNICAL SPECIFICATION (cont.)



FRONT AXLE EQUIPMENT		DESCRIPTION
S	7VXC1X	LUBRICANTS, FRONT AXLE
		PETROLEUM/SYNTHETIC (50/50) OIL FRONT AXLE

REAR AXLE EQUIPMENT		DESCRIPTION
	268AA9	REAR AXLE
		46000# (20900kg) MACK S462R CAST DUCTILE HOUSING
S	6MAA1X	REAR AXLE CASING WIDTH
		W/O WIDE TRACK AXLE
S	018AA6	CARRIER - REAR AXLE
		CRDP150/151 AVAILABLE WITH OPTIONAL DRIVER CONTROLLED INTERWHEEL DIFFERENTIAL LOCKS, SEE 254 SYMBOL
	TAX2FX	REAR AXLE RATIO
		5.31 RATIO
	186AC7	REAR SUSPENSION
		MACK mRIDE 46 PARABOLIC 3-LEAF, 46,000 lb, STANDARD DUTY
	GWXDGX	BOGIE SPREAD, REAR
		54" AXLE SPACING (BOGIE WHEELBASE)
	YVXA1X	REAR SHOCK ABSORBER
		REAR SHOCK ABSORBER
S	237037	AUX.SPRING BRAKE QTY
		AUX SPRING BRAKE QTY, 4 CHAMBERS
S	253AA4	BRAKES - REAR
		MERITOR "S" CAM 16.5"x7" Q+ (Total for QTY = 2)
S	U4XA1X	BRAKE, DRIVE, REAR
		CAST IRON
S	U1AA1X	REAR BRAKE ADJ MANUFACTURE
		HALDEX - AUTOMATIC (Total for QTY = 2)
	V1AB1X	REAR BRAKE CHAMBER SIZE
		REAR SPRING BRAKE CHAMBERS 30/30 TYPE
	N5FAFX	BRAKE ORI REAR-MOST DRIVE AXLE
		DRUM BRAKE CHAMBER ORIENTATION: Middle Mount - Forward of Axle - Chamber Up
	300AD0	PARKING BRAKE CHAMBER
		MGM TR-T; TAMPER-RESISTANT BRAKE CHAMBERS (Total for QTY = 2)
S	0LX15X	HUB MATERIAL, DRIVE
		IRON PRESET REAR HUB W/INTEGRATED SPINDLE NUT
S	7WXA1X	LUBRICANTS, REAR AXLE(s)
		FACTORY OPTION LUBE - REAR AXLE 80W-90
	254AB5	TRACTION DIFFERENTIAL
		DRIVER CONTROLLED INTER WHEEL DIFFERENTIAL LOCK ALL RR AXLES, MANUAL AIR VALVE W/WARNING LIGHT.
S	698078	ANTILOCK BRAKE SYSTEM
		BENDIX WITH TRACTION CONTROL 4S4M
S	URXD1X	BRAKE VALVE VERSION
		BENDIX SWITCHES AND VALVES WHERE POSSIBLE

FRAME EQUIPMENT/FUEL TANKS		DESCRIPTION
	271228	WHEELBASE
		228"
	374067	AF (OVERHANG)
		67"
	MCE0FE	FRAME RAILS & LINERS
		11.1 x 105 x 300mm - (0.437" x 4.13" x 11.81"); RBM 3,160,000 LB-IN
S	5CAAXX	FRONT FRAME EXT. (BOLTED ON)
		6" BOLT ON FRAME EXTENSION
S	A0XK1X	FRONT FRAME LENGTH
		STANDARD BUMPER POSITION
S	281AA5	CROSSMEMBERS
		BOC AND INTERMEDIATE(S) STEEL HD BACK-TO-BACK CHANNEL
S	Q5AA1X	REAR CROSSMEMBER OPTIONS
		STEEL CLOSING REAR CROSSMEMBER
S	X6XA1X	REAR FRAME TREATMENT
		WITHOUT TAPERED FRAME RAIL ENDS
S	4DXM9X	FRONT BUMPER
		EXTENDED-SWEPT BACK-STEEL
S	4ZAAAX	CROSSMEMBER, BOGIE TYPE
		BASIC SOLUTION TRUNNION BRACKET, STD HEIGHT
S	4EXG1X	TOWING DEVICE, FRONT
		HOOKS
S	2RAA1X	FUEL LEVEL SENDER UNIT, LIQUID
		BASIC FUEL LEVEL SENDER MOUNTED ON L.H TANK
S	288AF2	FUEL TANK - LH
		66 GALLON (250 L) 22" ALUMINUM, SLEEVED D-SHAPED
S	290AA1	FUEL TANK - RH
		W/O RH FUEL TANK
S	JHXB1X	FUEL HOSES, LIQUID
		BRAIDED HOSE
S	8520C2	FUEL FILLER NECK OPTIONS
		WITHOUT FILLER NECK SCREEN, WITH NON-LOCKABLE FUEL TANK CAP
	12AA1X	FUEL LINE OPTIONS, LIQUID
		W/O FUEL LINE OPTION
S	Q2AA1X	CAB INSTEP VERSION
		STANDARD 2 STEP CAB ACCESS

AIR/BRAKE		DESCRIPTION
S	UWXC1X	AIRTANK DRAIN VALVE
		MANUAL (PETCOCK) DRAIN VALVES ON ALL TANKS

PRICELIST DATE
20220103

QUOTATION
CONW2021000249A546

DATE
2/18/2022

PAGE
3 of 9

TECHNICAL SPECIFICATION *(cont.)*



AIR/BRAKE		DESCRIPTION	
	U2XA2X	AIRTANK MATERIAL	ALUMINUM AIR TANK, POLISHED ALUMINUM FINISH
S	141AA1	RELOCATE AIR RESERVOIRS	W/O RELOCATED AIR TANKS
S	1JAAAX	PARKING BRAKE VALVE	SINGLE VALVE SYSTEM

ELECTRICAL		DESCRIPTION	
	5RXA6X	BACK-UP ALARM	ECCO BACK-UP ALARM 575 CONSTANT SOUND LEVEL 107 dB
	EAXD4X	DASH MOUNTED SWITCHES	SIX (6) ASSIGNABLE BODYBUILDER DASH SWITCHES (5 ON-OFF, 1 MOMENTARY)
S	3120A2	ROOF & SIDE MARKER LIGHTS	(5) TRUCKLITE CHROME BULLET ROOF MARKER & STANDARD MARKER / DIRECTIONAL SIGNAL
S	LSXJ7X	DAYTIME RUNNING LIGHTS	W/OVERRIDE SWITCH, PARK BRAKE & ENGINE RUNNING ACTIVATED
S	X2AA1X	DRL OVERRIDE SPEED THRESHOLD	DRL OVERRIDE SPEED THRESHOLD 8 KMPH (5 MPH)
S	NEXC1X	TAIL LAMPS	INCANDESCENT TAIL LAMPS

PTO		DESCRIPTION	
	TYXE1X	POWER TAKE OFF CONTROL	TRANSMISSION PTO SWITCH AND LIGHT WITH WIRING AND PIPING FOR LOCAL INSTALLATION
S	2WAZ1X	PTO TRANS NEUTRAL CONTRL CHECK	W/O NEUTRAL CONTROL
S	B83083	BODY BUILDER INTERFACE	BODY LINK III W/CAB PASS-THRU

SPECIALTY EQUIPMENT		DESCRIPTION	
S	MCQ01Q	LANE SUPPORT SYSTEM (LSS)	WITHOUT LANE SUPPORT SYSTEM
S	2PEZ1X	DATA CAPTURE	WITHOUT DATA CAPTURE
S	1PAZ1X	CAMERA, SURVEILLANCE	WITHOUT CAMERA

CAB INTERIOR (A THRU G)		DESCRIPTION	
S	198048	GAUGES - UNIT OF MEASURE	U.S. UNITS (PREDOMINANT)
S	173AA5	AIR CONDITIONING/HEATER	BLEND AIR HVAC W/"ATC" TEMP REGULATION
S	I0XAHX	DOME LAMP, INTERIOR	(4) DOME LAMPS - DOOR AND SWITCH ACTIVATED
S	3XAA1X	DASH INDICATOR - LAMP BODY OUT OF POS	DASH MTD, INDICATOR BODY/HOIST UP "BODYBUILDER LAMP"
	7860E6	FIRE EXTINGUISHER	5LB (ABC RATED) MOUNTED BETWEEN DRIVER SEAT BASE AND DOOR VALVE AIMED REARWARD
S	V8DZ1X	CARBON MONOXIDE DETECTION SYS	WITHOUT CARBON MONOXIDE DETECTION SYSTEM
S	184AA2	FLOOR COVERING	POLYURETHANE FLOOR MAT WITHOUT REMOVABLE INSERTS

CAB INTERIOR (H THRU R)		DESCRIPTION	
S	C52082	INSTMNT CLUSTER LANGUAGE	DEFAULT: ENGLISH, SPANISH, FRENCH
S	20XA1X	KEY TYPES FOR DOORS	ALL CHASSIS KEYED AT RANDOM
S	13AA1X	DOOR OPENING OPTIONS	W/O ELECTRONIC KEYLESS ENTRY
S	E3XD1X	FORWARD OVERHEAD STORAGE	(2) STORAGE COMPARTMENTS AND NET RETAINERS W/CENTER MOUNTING FOR CB PROVISIONS
S	1740D4	AUDIO ACCOMMODATION	PREMIUM STEREO, AM/FM, MP3, WEATHER BAND, BLUETOOTH
S	73AC1X	ANTENNA - RADIO	RADIO ANTENNA, CAB MOUNTED BEHIND LH DOOR
S	1WAB1X	POWER LEADS	POWER LEADS (5-WAY BINDING POSTS FOR CB RADIO) IN HEADER CONSOLE
S	5CXB2X	AUDIO SPEAKER LOCATION	SPEAKER LOCATION, IN DOORS, MIDDLE HIGH SIDE PANEL
S	5JXAIX	COM.RADIO PREP KIT (CB)	CB RADIO MOUNTING REINFORCEMENT IN HEADER CONSOLE
S	21XA1X	AUXILIARY REAR WINDOW	REAR WINDOW (FIXED TYPE)
S	IFXB1X	REAR WALL STORAGE COMPARTMENT	STORAGE POUCH REAR

TECHNICAL SPECIFICATION *(cont.)*



CAB INTERIOR (S THRU Z)		DESCRIPTION
S	004014	INTERIOR TRIM LEVELS STANDARD PACKAGE, STEEL GRAY (Package 11A)
S	196AAA	SEAT - DRIVER'S MACK-AIR, HIGH BACK, 1 CHAMBER AIR LUMBAR
S	MAPB2X	SEAT COVERING - DRIVER'S DRIVER'S SEAT - STEEL GREY VINYL
	1971J7	SEAT - PASSENGER'S MACK-FIXED, BENCH SEAT, MID BACK, W/ STORAGE BOX
	MAQA1X	SEAT COVERING - PASSENGER'S PASSENGER'S SEAT - BLACK MORDURA
	5920B2	SEAT BELT(S) LAP & SHOULDER (BOTH SEATS) & LAP BELT FOR INBOARD RIDER
S	2QAA1X	IGNITION TYPE KEY TYPE
	161011	STEERING WHEEL 2 SPOKE URETHANE GRIP, SATIN ALUMINUM SPOKES, WITH SWITCHES
S	WSXBAX	WINDSHIELD TYPE TWO PIECE WINDSHIELD
S	145AA1	CAB GLASS TINTED WINDSHIELD & SIDE WINDOWS & REAR WINDOW (IF EQUIPPED)
	JQXABX	WASHER RESERVOIR POSITION WINDSHIELD WASHER RESERVOIR INSTALLED BOC
S	148AA3	WINDSHIELD WIPERS 2 SPEED ELECTRIC MOTOR W/INTERMITTENT FEATURE

CAB EXTERIOR		DESCRIPTION
	MCY01Y	HOOD LATCH TYPE & FINISH STRAP TYPE HOOD LATCH WITH BRIGHT FINISH
	MCG0AG	EXTERIOR TRIM FINISH AND PACKAGES GRANITE BRIGHT AIR INTAKE
	400AA5	GRILLE BRIGHT FINISH GRILLE W/O SURROUND RADIATOR MOUNTED
S	MCD03D	PASSENGER SIDE VISIBILITY OPTIONS AUXILIARY WINDOW IN RH DOOR
	5870B7	GRAB HANDLES BF EXTERIOR CAB GRAB HANDLES, BLACK GRAB HANDLE RH INTERIOR WINDSHIELD POST
	154AA6	HORN - AIR (1) BLACK TWIN TRUMPET, UNDER CAB MOUNTED
S	LXXC1X	HORN - ELECTRICAL SINGLE TONE
	152AC5	MIRRORS - EXTERIOR BULLDOG STYLIZED MIRRORS - LH & RH HEATED & MOTORIZED AND ILLUMINATED W/INTEGRAL CONVEX MIRROR
	157027	SUN VISOR - EXTERIOR SUN VISOR, EXTERIOR, FIBERGLASS (PAINTED)

AERODYNAMIC DEVICES		DESCRIPTION
S	159AA1	CAB AERODYNAMIC PACKAGES WITHOUT CAB AERODYNAMIC DEVICES
S	MCM99B	FRONT CHASSIS AERODYNAMIC PACKAGE WITHOUT FRONT AERODYNAMIC FAIRINGS

WHEELS & TIRES		DESCRIPTION
	9004Y0	TIRES BRAND/TYPE - FRONT 315/80R22.5 L BRIDGESTONE M870 (20000 lbs) (Total for QTY = 2)
	5311R1	WHEELS - FRONT 22.5x9.00 MAXION WHITE POWDER COAT STEEL, 7.00" OFFSET, 5 HAND HOLE (Total for QTY = 2)
	9013E1	TIRES BRAND/TYPE - REAR 11R22.5 G BRIDGESTONE M726 ELA (23360 lbs) (DRIVE ONLY) (Total for QTY = 8)
	3461L6	WHEELS - REAR 22.5x8.25 MAXION WHITE POWDER COAT STEEL, 6.62" OFFSET, 2 HAND HOLE (Total for QTY = 8)
	H1EA1X	DRIVE WHEEL STUDS DRIVE WHEEL STUDS BASIC LENGTH
S	15XABX	TIRE INFLATION VALVE STANDARD VALVE STEMS AND CAPS
S	MCH03H	FRONT HUB/WHEEL TRIM WITHOUT FRONT HUB/WHEEL TRIM
S	MCI03I	REAR HUB/WHEEL TRIM WITHOUT REAR HUB/WHEEL TRIM (Total for QTY = 2)
S	80AA1X	WHEEL NUT & FINISH, FRONT WHEEL NUT BASIC FINISH, FRONT
S	3PBA1X	WHEEL NUT FINISH, REAR (CA) WHEEL NUT BASIC FINISH, REAR

COMMUNICATION SYSTEMS		DESCRIPTION
S	3YAA1X	CO-PILOT - DISPLAY FEATURES ACCESS LEVEL CO-PILOT DISPLAY, DRIVER ACCESS LEVEL 1

TECHNICAL SPECIFICATION *(cont.)*



COMMUNICATION SYSTEMS			DESCRIPTION
S	M30060	TELEMATIC GATEWAY	TELEMATICS GATEWAY (P2), 4G/LTE AND WLAN SYSTEM WITH DIAGNOSTIC SERVICES

ENGINE ELECTRONICS			DESCRIPTION
S	WOXA1X	OIL PRESSURE, ENGINE SHUTDOWN	OIL PRESSURE, ENGINE SHUTDOWN
S	WMXA1X	COOLANT TEMP, ENGINE SHUTDOWN	COOLANT TEMP, ENGINE SHUTDOWN
S	K5XA2X	ENGINE PROTECTION SYSTEM	ENGINE PROTECTION (SHUTDOWN)
S	K7XY1X	ENGINE IDLE CONTROL	IDLE CONTROL, 600 RPM
S	X0AB0X	SMART IDLE ELEVATED IDLE RPM TIME	INCREASE 10 MINUTE MAXIMUM TIME
S	M3CA1X	IDLE S/D ABS TAMPER CHECK	IDLE SHUTDOWN ABS TAMPER CHECK, ENABLED
S	A8AALX	IDLE S/D IF WARM-UP TEMP	38C DEG (100F), WARM UP TEMP DELAY
S	A4AAEX	IDLE S/D WARM-UP TIMER	5 MIN. WARM UP TIME DELAY
S	B0AAAX	IDLE SHUTDOWN IF POWER > LIMIT	ENG IDLE SHUTDOWN TIME OVERRIDDEN IF TORQUE > THAN LIMIT
S	D2AAFV	AMBIENT TEMP MIN TRESHOLD	AMBIENT TEMP MIN TRESHOLD, 16 DEG C, (60 DEG F)
S	D3AAEX	AMBIENT TEMP MAX TRESHOLD	AMBIENT TEMP MAX TRESHOLD, 27 DEG C, (80 DEG F)
S	B3ABAX	EL HD THROTTLE,MAX ROAD SPEED	ELECTRONIC HAND THROTTLE, MAX ROAD SPEED, 16 KM/H (10 MPH)
	B6ACEX	EL HAND THROTTLE,MAX ENG SPEED	ELECTRONIC HAND THROTTLE, MAX ENGINE SPEED, 2100 RPM
S	B4ADAX	EL HAND THROTTLE,MIN ENG SPEED	ELECTRONIC HAND THROTTLE, MIN ENGINE SPEED, 700 RPM

TRANSMISSION ELECTRONICS			DESCRIPTION
	7790V9	TRANSMISSION ELECTRONICS PACKAGE	GENERAL REFUSE SERVICE (142)
	B1EC1X	TRANSM AUTO NEUTRAL ON P-BRAKE	ALLISON PARK BRAKE AUTO NEUTRAL-ALLOWS THE DRIVER TO ENGAGE GEAR PRIOR TO DISENGAGING THE PARK BRAKE
S	MAV01V	TRANSMISSION ELECTRONIC SHIFTING PROPERTIES	W/O ALLISON FUELSENSE 2.0 PROGRAMMING

VEHICLE ELECTRONICS			DESCRIPTION
S	JCXE6X	ROAD SPEED LIMITER SETTING	105 KM/H ROAD SPEED LIMITER(65 MPH)
	Y3CC5X	PEDAL RSL SETTING	105 KM/H PEDAL ROAD SPEED LIMITER (65MPH)
S	JDXA1X	CRUISE CONTROL	CRUISE CONTROL
S	JFXLLX	CRUISE CONTROL, MAX SPEED	MAX CRUISE, 105 KPH (65 MPH)
S	E3AACX	CRUISE CONTROL MIN SPEED	MIN CRUISE, 32 KPH (20 MPH)
S	E5AACX	ENG BRK ENGAGE IN CRUISE	ENG BRK ENGAGE IN CRUISE, 3 MPH, ABOVE SET SPEED
	X2BB1X	ROAD SPEED LIMIT CONTROL TYPE	RSL CONTROL TYPE NORMAL
	W5BJ2X	MAXIMUM ENG SPEED AT 0 MPH	1950 MAXIMUM ENGINE SPEED AT 0 MPH
S	A4BAAX	DETECTION SPEED SENSR TMPRNG	DETECTION OF SPEED SENSOR TAMPERING, ENABLE
S	8RXAEX	ENG TORQUE LIMIT,SPEED SENSOR	ENG TORQUE LIMITED TO 50%, IF SPEED SENSOR TAMPER DETECTED
S	X3CB1X	DRIVER ID FUNCTION	DRIVER ID FUNCTION, DISABLED
S	0PAZ1X	DR PERFORMANCE PARAMETERS	WITHOUT DRIVER PERFORMANCE PARAMETERS
S	G5AAHX	ENGINE OVERSPEED,ALL COND, LOG	ENGINE OVERSPEED, ALL CONDITIONS, TIME LOG IF ABOVE 2200 RPM
S	G2AAGX	ENGINE OVERSPEED,FUELED, LOG	ENGINE OVERSPEED, FUELED, TIME LOG IF ABOVE 2100 RPM
S	G4AAUX	VEHICLE OVERSPEED,ALL COND,LOG	VEHICLE OVERSPEED,ALL COND, TIME LOG IF ABOVE 75MPH (121KM/H)
S	G3AAPX	VEHICLE OVERSPEED, FUELED, LOG	VEHICLE OVERSPEED, FUELED, TIME LOG IF ABOVE 70MPH (113KM/H)
S	G1AABX	ENGINE IDLE DELAY TO LOG	ENGINE IDLE DELAY TO START LOG, 2 MIN
S	W9A01X	PERIODIC TRIP LOG DAY OF MONTH	PERIODIC TRIP LOG, DAY 1 OF THE MONTH

TECHNICAL SPECIFICATION (cont.)



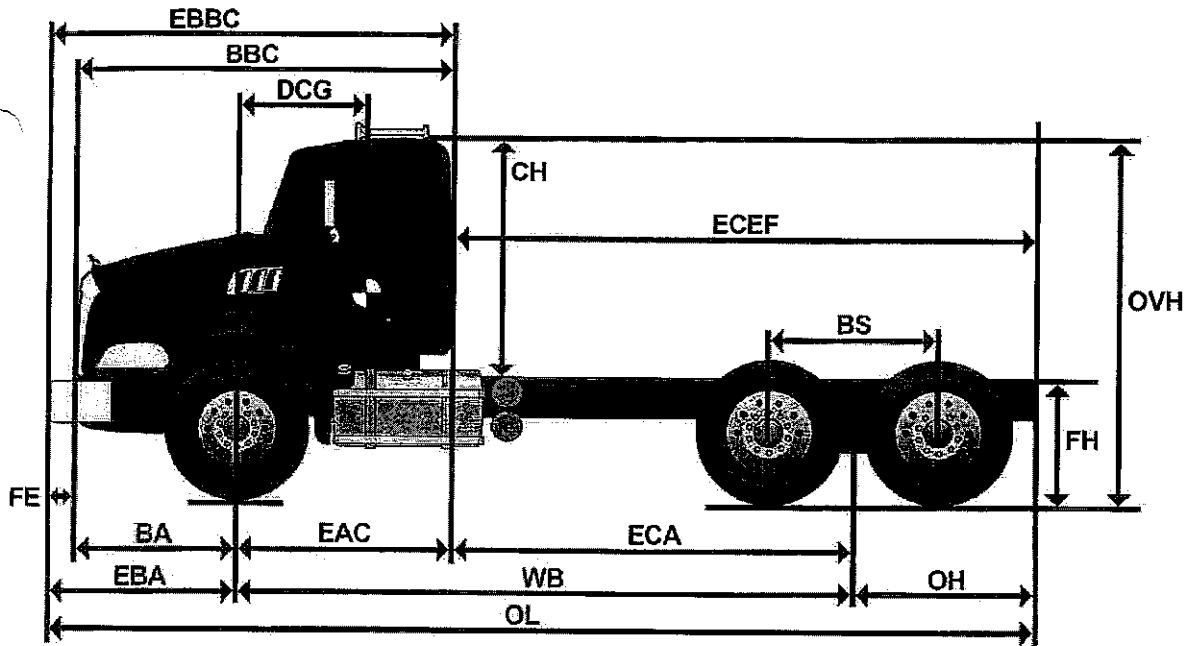
PAINT		DESCRIPTION	
S	950AD0	PAINT DESIGN	SINGLE COLOR
S	924014	PAINT TYPE	SOLID PAINT
S	944AA7	PAINT COLOR - FIRST COLOR	MACK WHITE; P9188
S	945998	PAINT COLOR - SECOND COLOR	NO SECOND TRUCK COLOR PROVIDED; NO COLOR
S	946998	PAINT COLOR - THIRD COLOR	NO THIRD TRUCK COLOR PROVIDED; NO COLOR
S	996AA8	PAINT - CAB PAINT SYSTEM	PAINT - CAB, URETHANE CLEAR COAT
S	MPB944	CAB COLOR	SAME AS FIRST COLOR - CAB
S	MPD944	HOOD COLOR	SAME AS FIRST COLOR - HOOD
	966944	SUN VISOR COLOR	SAME AS FIRST COLOR - SUN VISOR
S	MPC998	SLEEPER ROOF COLOR	WITHOUT SLEEPER ROOF COLOR
S	MPA998	ROOF FAIRING COLOR	WITHOUT ROOF FAIRING
S	951AA6	CHASSIS RUNNING GEAR	MACK BLACK (URETHANE); P3036
S	958018	BUMPER	PAINT BUMPER SAME COLOR AS CHASSIS RUNNING GEAR
S	959019	FUEL TANK - ***NO INVENTED VARIANTS ALLOWED in the FUEL TANK PAINT FAMILY***	W/O OPTIONAL FUEL TANK PAINT
S	962032	HUBS & DRUMS-FRONT	SAME AS CHASSIS RUNNING GEAR
S	963033	HUBS & DRUMS-REAR	SAME AS CHASSIS RUNNING GEAR

CALCULATED CODES - KAX		DESCRIPTION	
S	9JXA1X	PROPCALC SELECTION	YES, THE ORDER MUST BE CALCULATED
	D5EA1X	AUTO ROUTING & CLIPPING, CENTER	AUTOMATIC ROUTING & CLIPPING PLACEMENT, CENTER SECTION

BASE WARRANTY & PURCHASED COVERAGES		DESCRIPTION	
S	898003	VEHICLE WARRANTY TYPE	HEAVY DUTY WARRANTY CLASSIFICATION
S	M50030	BASIC CHASSIS COVERAGE	HEAVY DUTY STANDARD BASE COVERAGE 12 MONTHS/100,000 MILES (161,000 KM)
	M8302T	EMISSION - SURCHARGE	CARB + EPA for Mack MP7 / MP8 Diesel
	M51147	ENGINE WARRANTY	CARB - ENGINE PLAN 2, 60 MO/250K MILES, MP7/MP8 <460HP
S	M52022	EMISSION COMPONENT COVERAGE	US and CANADA EQUIPPED VEHICLE EMISSION COMPONENTS COVERAGE 60 MONTHS/100,000 MILES (161,000 KM)
	M540B4	TRANSMISSION WARRANTY	ALLISON TRANSMISSIONS (Contact Allison Transmission for standard warranty and extended coverage data)
S	M550G7	CARRIER & AXLE HOUSING WARRANTY	STANDARD MACK HEAVY DUTY COVERAGE 60 MONTHS / 500,000 (804,672 KM)
S	M56026	AIR CONDITIONING WARRANTY	AIR CONDITIONING STANDARD COVERAGE (Sealed System Only) 12 MONTHS UNLIMITED MILEAGE
S	M57027	CHASSIS TOWING WARRANTY	STANDARD NORMAL / HEAVY DUTY CHASSIS TOWING 90 DAYS OR 5,000 MILES
S	M58028	ENGINE TOWING WARRANTY	STANDARD MACK ENGINE TOWING COVERAGE 24 MONTHS/250,000 MILES (402,000 KM)
	M690C9	GUARDDOG CONNECT BUNDLE	60 MONTH - GUARDDOG CONNECT WITH MACK OTA (with ASIST and Mack OneCall)
S	M78010	PREPAID API	WITHOUT PREPAID API
S	M67017	PREMIUM MAINTENANCE - CHASSIS LUBE AND INSPECTION	W/O PREMIUM MAINTENANCE - CHASSIS LUBE AND INSPECTION COVERAGE

VEHICLE SPECIFICATION/CALCULATED PERFORMANCE SUMMARY

Description	Sales Code	Dwg Ref	Length	UOM
Front Frame Extension	N/A	FE	6.1	INCHES
Bumper to Front Axle	N/A	BA	51.1	INCHES
Wheelbase	N/A	WB	227.8	INCHES
Rear Overhang	N/A	OH	67.3	INCHES
Overall Length	N/A	OL	352.2	INCHES
Bumper to Back of Cab	N/A	BBC	116.5	INCHES
Eff. Bumper to Back of Cab	N/A	EBBC	127.1	INCHES
Eff. Cab to Rear Axle	N/A	ECA	157.8	INCHES
Eff. Front Axle to Back of Cab	N/A	EAC	70.0	INCHES
Eff. Cab to End of Frame	N/A	ECEF	225.1	INCHES
Unladen 5th Wheel Height	E5BZ1X	5W	0.0	INCHES
Unladen Frame Height	N/A	FH	44.0	INCHES
Cab Height	N/A	CH	70.9	INCHES
Overall Height	N/A	OVH	118.0	INCHES
Driver CG	N/A	DCG	47.2	INCHES
54" AXLE SPACING (BOGIE WHEELBASE)	GWXDGX	BS	53.9	INCHES
Second Front Axle Spacing	RHXZ1X	SFAS	0.0	INCHES





VEHICLE SPECIFICATION/CALCULATED PERFORMANCE SUMMARY

Sub-Category	Sales Code	Sales Code Description	Value	Unit
Front Axle	240AA3	20000# (9100 KG) MACK FXL20 WIDE PIVOT CENTER STRAIGHT SPINDLE/UNITIZED BEARINGS	20000	LB
Front Suspension	244AB4	MACK TAPERLEAF 20000# (9100 KG) GROUND LOAD RATING, EQUAL BIAS	20000	LB
Front Tires	9004Y0	315/80R22.5 L BRIDGESTONE M870 (20000 lbs)	20000	LB
Front Wheels	5311R1	22.5x9.00 MAXION WHITE POWDER COAT STEEL, 7.00" OFFSET, 5 HAND HOLE	20001	LB
		Front GAWR	20000	LB
Rear Axle	268AA9	46000# (20900kg) MACK S462R CAST DUCTILE HOUSING	46001	LB
Rear Suspension	186AC7	MACK mRIDE 46 PARABOLIC 3-LEAF, 46,000 lb, STANDARD DUTY	46001	LB
Rear Tires	9013E1	11R22.5 G BRIDGESTONE M726 ELA (23360 lbs) (DRIVE ONLY)	46721	LB
Rear Wheels	3461L6	22.5x8.25 MAXION WHITE POWDER COAT STEEL, 6.62" OFFSET, 2 HAND HOLE	64001	LB
		Rear GAWR	46001	LB
		Truck GVWR	66000	LB
		Gross Combination Weight Rating	0	LB
		Tax Value GVWR (USA FET Only)	66000	LB



Mack Trucks
www.macktrucks.com

 Sign

 Print

 Download

Financing Options Available

Low monthly payments to fit your budget

[View Financing Options](#)

Checking your rate won't impact your credit score

INVOICE

Service Address

Ryan's Park 43 Park
Rd.
Carmel, NY

Bill To

Town Of Kent Rec. &
Parks Dept. / Chris
Kehoe
25 Sybils Crossing
Kent Lakes, NY 10512
(845) 590-6556

A Line Striping

P.o. Box 504
Hopewell Jct., N.Y. 12533
Phone: (845) 629-1193
Email: alinstripe@aol.com
Fax: (845) 223-5030

Payment Terms

Due upon receipt

Invoice #

LS-776

Date

02/21/2022

Description

Total

Layout And Stripe

\$1,900.00

Lot #1 North

Approx. 20 Total - 90°, Head to Head & Diagonal Parking Stalls. (W)
Approx. 5 - Traffic Flow Arrows. (W)
Approx. 100 ln. ft. Crosshatching. (W)

Lot #2 South

Approx. 45 Total - 90°, Head to Head & Diagonal Parking Stalls. (W)
2 - Handicap Stalls. (B)
Approx. 7 - Traffic Flow Arrows. (W)

Subtotal

\$1,900.00

Total

\$1,900.00

Notes:

Estimate is based on completion in one dispatch.

NYS Approved Traffic Paint.

For minimal inconvenience to your customers and personnel, we will attempt to perform work during off peak hours.



SHERWIN-WILLIAMS.

2/28/22

Chris Kehoe
(845) 590-6556
Town of Kent Lakes
43 Park Rd.
Carmel, NY 10512
parks@townofkentny.gov
Re: Parking lot applications

Dear Chris:

Enclosed please find the quote to perform the services outlined below for the above referenced property.

(Ryan's Park) 43 Park Rd. Carmel, NY 10512

Full layout and stripe of the designated parking lots consisting of 50 parking lines (white) 9 arrows, 4 RESERVED stencils, 3 handicaps, 300 ft of hatching(white) and 126 ft of long lines(white) for the garage parking area. The empty lot will consist of 25 parking lines, 80 ft of long lines. 195 ft of hatching and 4 arrows.: **All items where applicable: Sherwin Williams Traffic Marking Paint.**

Price : \$1,775.00

Terms: Net 20 days

Prices do not include state sales tax if applicable.

Please call or email with any questions.

Thank you for the opportunity to quote Kent Lakes.

Sincerely,
Sal Bova
We Do Lines
Mobile: 203-999-9916
Email: sbova@wedolines.com

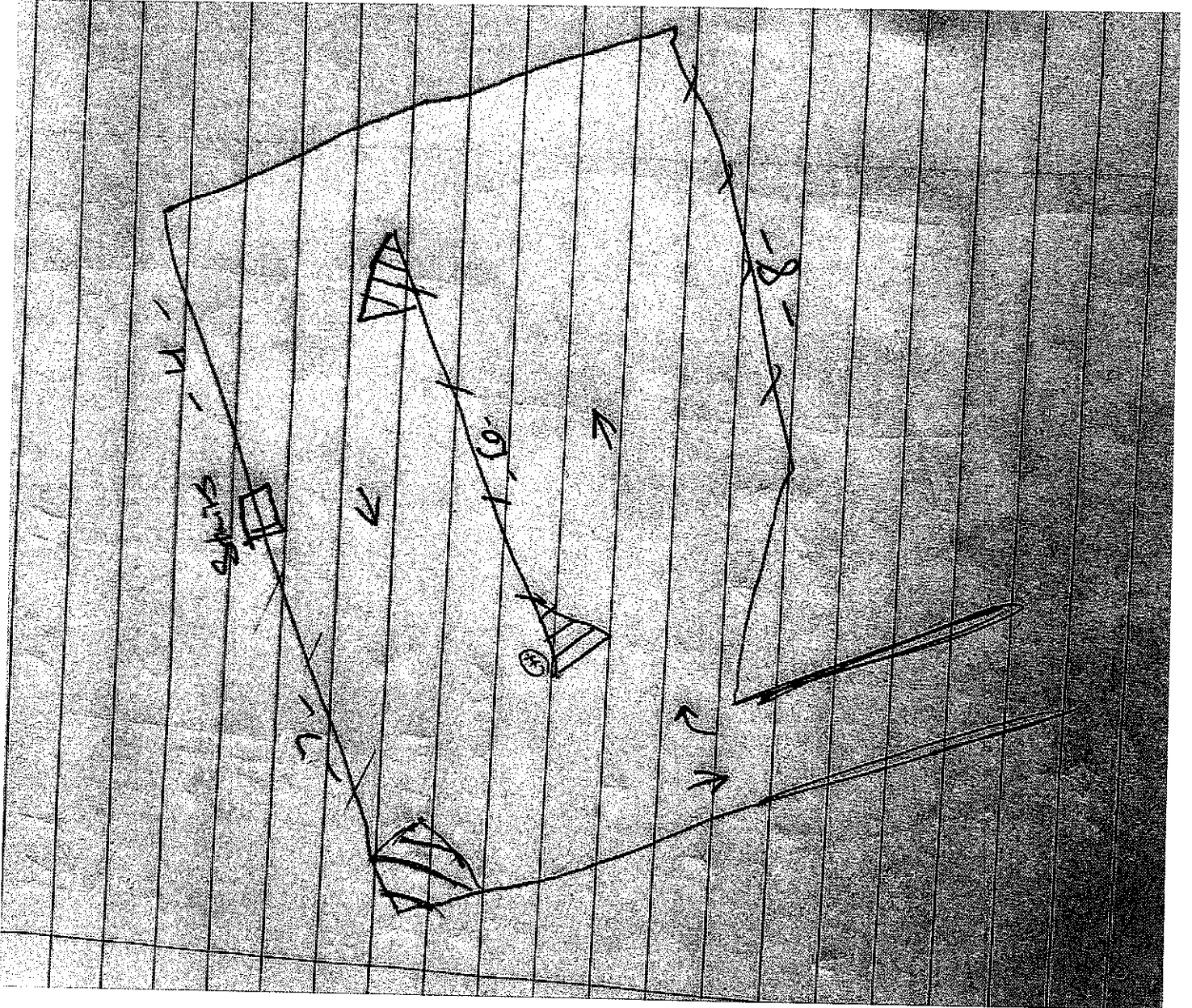
164 Ramapoo Road, Ridgefield, CT 06877

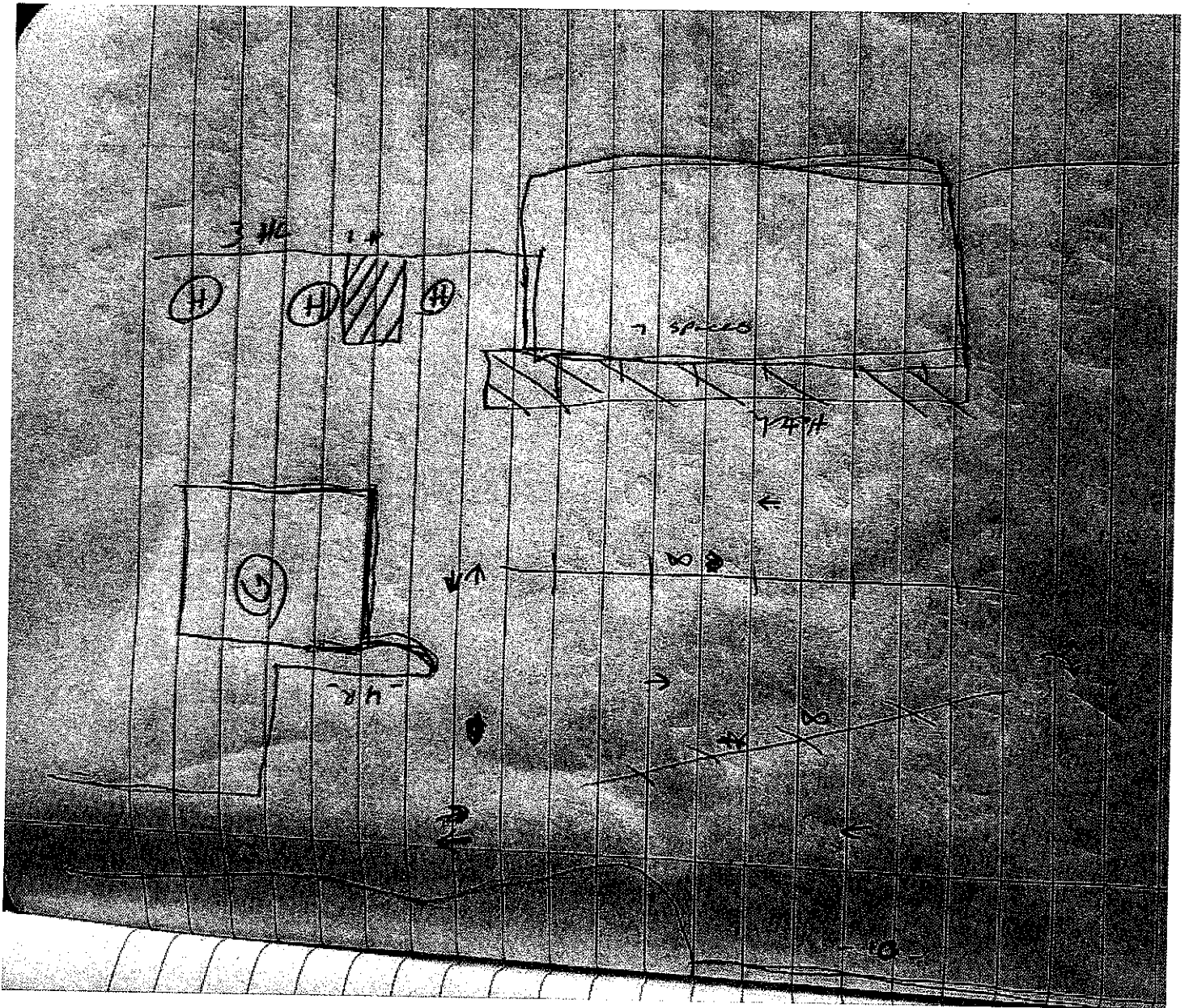
Phone: 1-877-336-5463

Fax: 1-860-395-1099

Website: www.WeDoLines.com

Thanks!





Sal Bova
 (203) 999-9916
sbova@wedolines.com

